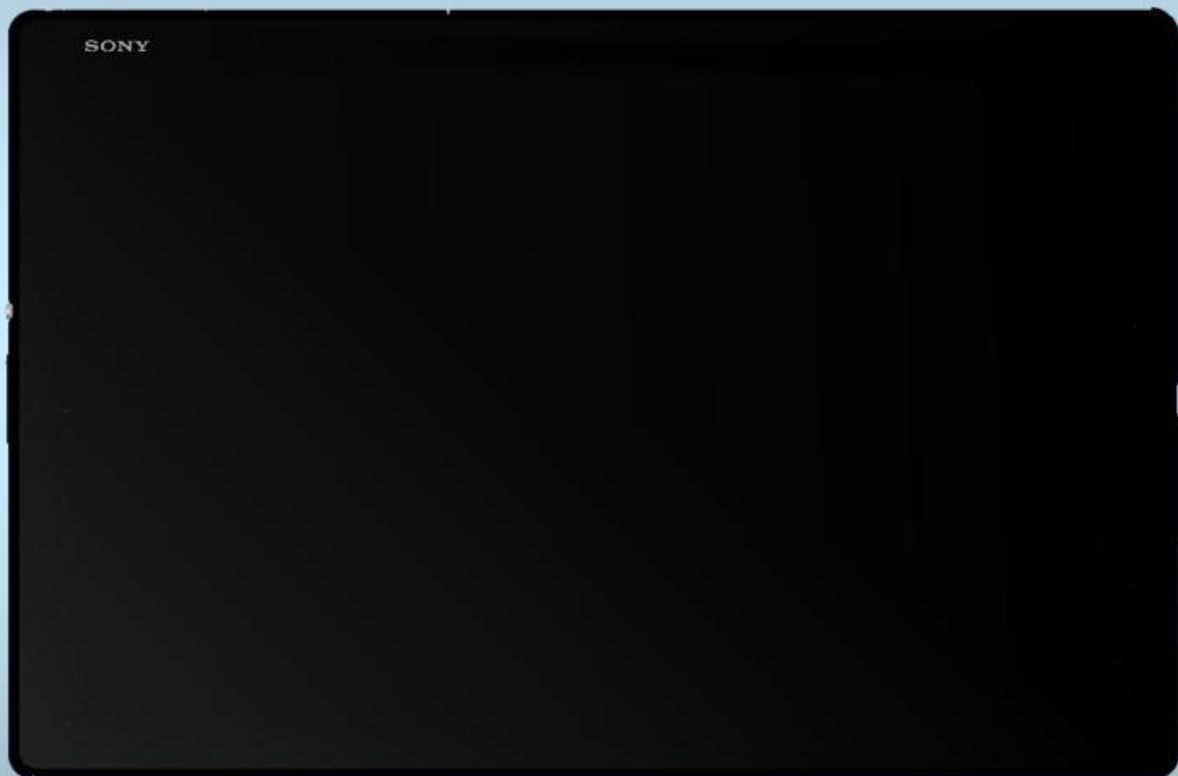


Troubleshooting Guide

- mechanical -



Xperia™ Z4 Tablet
SGP712,SGP771

CONTENTS

1	Problem Areas	4
1.1	Power	4
1.1.1	Will not power on or will switch off randomly	4
1.2	Keys	5
1.2.1	Menu, Home and Multitask Keys	5
1.2.2	Volume Key	5
1.2.3	On/Off Key	7
1.3	Touch Screen	9
1.3.1	Touch Screen malfunction	9
1.4	Display	11
1.4.1	Graphics & Illumination	11
1.5	LED/Illumination	13
1.5.1	LED/Illumination	13
1.6	Speaker	14
1.6.1	Top Speaker (Right channel)	14
1.6.2	Top Speaker (Left channel)	16
1.7	Microphone	18
1.7.1	Microphone	18
1.8	Vibrator	19
1.8.1	Vibrator not generating alerts	19
1.9	Camera	21
1.9.1	Camera defects	21
1.9.2	Video Call Camera defects	22
1.10	Antenna Switching	23
1.10.1	Antenna Switching fails	23
1.11	Bluetooth and WLAN	24
1.11.1	Bluetooth or WLAN connection failure	24
1.12	NFC	26
1.12.1	NFC malfunctions	26
1.13	GPS	27
1.13.1	GPS malfunctions	27
1.14	Compass	28
1.14.1	Compass test fails	28
1.15	Accelerometer	29
1.15.1	Accelerometer test fails	29
1.16	Gyroscope	30
1.16.1	Gyroscope test fails	30
1.17	Ambient Light Sensor	31
1.17.1	Light sensor malfunctions	31
1.18	Proximity Sensor Back (N/A SGP712)	33
1.18.1	Proximity Sensor Back malfunctions	33
1.19	Hall Element	34
1.19.1	Hall Element test fails	34

1.20 Real Time Clock	35
1.20.1 Real time clock test fails	35
1.21 Total call time (N/A SGP712)	36
1.21.1 Total call time fails	36
1.22 Storage.....	37
1.22.1 Memory Card not detected	37
1.23 Security.....	38
1.23.1 Security fails	38
1.24 FM Radio.....	39
1.24.1 No/Poor FM Radio reception	39
1.25 Battery test	40
1.25.1 Battery test fails.....	40
1.26 Verify Certificates.....	41
1.26.1 Verify Certificates fails	41
1.27 TV-Out Test.....	42
1.27.1 TV-Out test fails	42
1.28 Network & Signal (N/A SGP712).....	43
1.28.1 No/Poor signal	43
1.29 SIM (N/A SGP712).....	46
1.29.1 SIM not detected.....	46
1.29.2 Incorrect UIM or SIM indicated	46
1.30 Charging	47
1.30.1 Battery will not charge by USB connector	47
1.31 HandsFree by Wire.....	49
1.31.1 Connection to portable Handsfree fails.....	49
1.32 Data Communication	50
1.32.1 Data transfer via System Connector fails.....	50
1.33 Water Resistance	51
1.33.1 Water Resistance fails.....	51
2 Revision History	53

Always firstly disconnect the Battery BtB connector to cut off power supply when the Display Assembly is disassembled.

Always finally connect the Battery BtB connector before the Display Assembly is reassembled.

1 Problem Areas

1.1 Power

1.1.1 Will not power on or will switch off randomly

Check:

Check whether the Notification LED blinks by pressing the on/off key.

Action:

Perform a force shut down, press power key and volume up key for 10 seconds and then power on the unit again.

2. If NO Notification LED blink is detected, check that the Battery 6000.0 mAh is charging when connected to a charger.

Follow Test Instruction (Charging via USB), Diagnostic Battery / Charging status: Perform a force shut down (Press the small off button next to the SIM card holder for 10sec).

If you do not get any vibration and you continue to press the HW reset, then after 2 minutes (120s) the phone will perform a very deep HW reset without any notification!

This can solve some rare cases without having to open the unit and remove and attach the battery connector.

Check:

Inspect the BtB connector of Battery 6000.0 mAh to Main PBA.

Action:

1. Remove and reconnect Battery 6000.0 mAh, test charging and then test powering on the unit.

2. If dirty or oxidized – clean it.

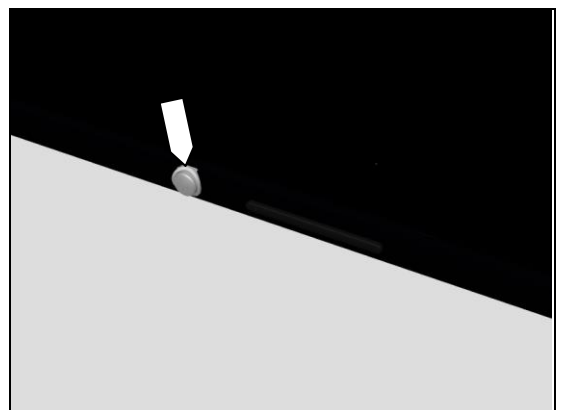
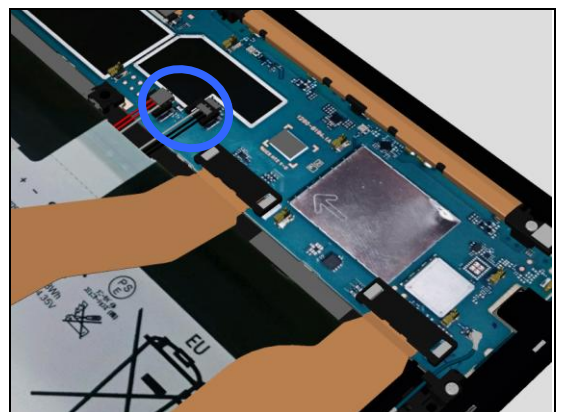
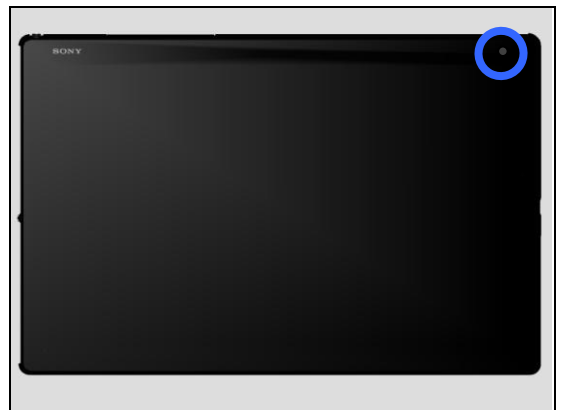
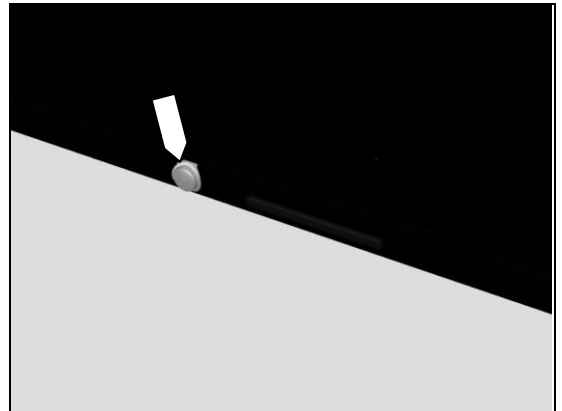
3. If the BtB contact on Battery 6000.0 mAh or Battery 6000.0 mAh is damaged – replace Battery 6000.0 mAh.

Check:

Inspect the on/off key.

Action:

Refer to section 1.2.3 'On/Off Key'.



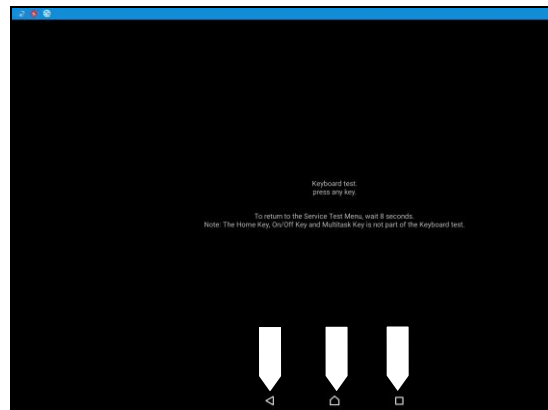
Problem Areas

1.2 Keys

1.2.1 Menu, Home and Multitask Keys

Action:

1. Refer to section 1.3 'Touch Screen'.
2. Replace Main PBA.



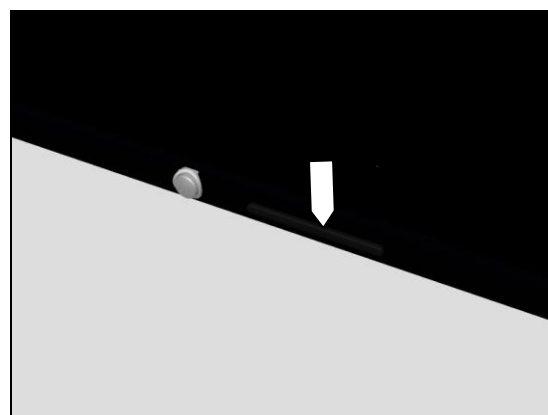
1.2.2 Volume Key

Check:

Inspect the external area of the Key Volume.

Action:

1. If dirty – clean it.



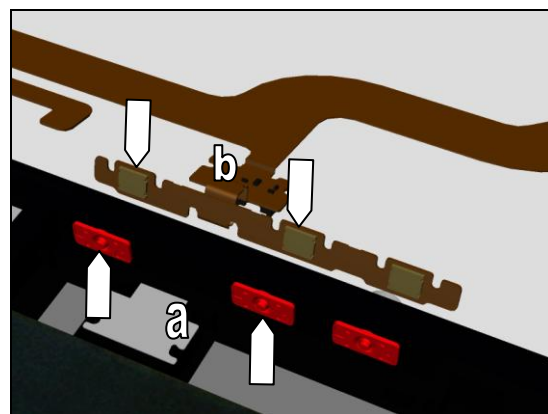
2. If the Key Volume is damaged – replace the Key Volume.

Check:

Inspect the Key Gasket of the Volume Key (a) and Volume Key switch (b).

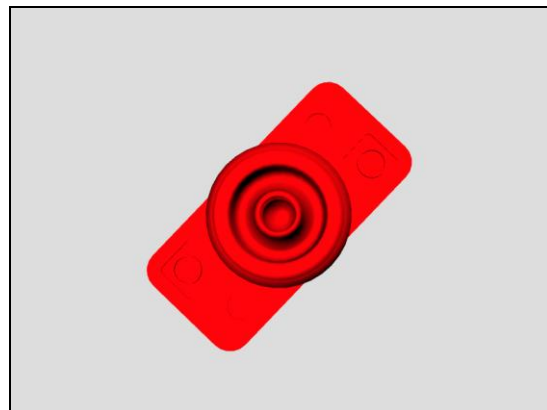
Action:

1. If dirty – clean them.

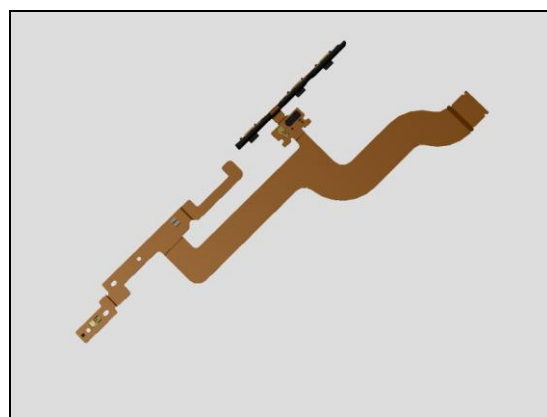


Problem Areas

2. If the Key Gasket of the Volume Key is – replace the Key Gasket.



3. If the volume key switch is damaged – replace the FPC Assembly Relay Key.

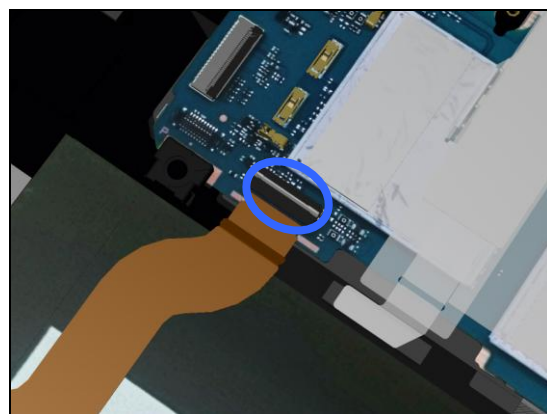


Check:

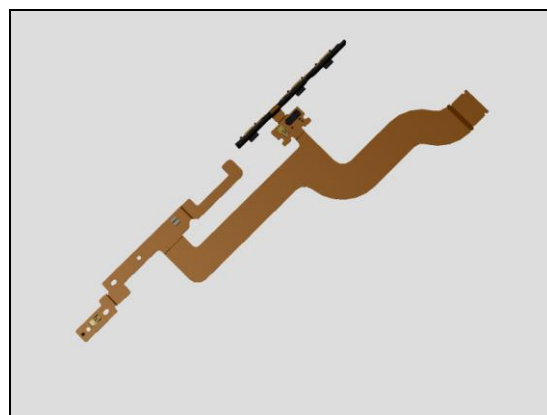
Inspect the ZIF connector of the FPC Assembly Relay Key to Main PBA.

Action:

1. If not properly connected – disconnect and reconnect it.
2. If dirty or oxidized – clean it.



3. If the ZIF connector of the FPC Assembly Relay Key is damaged – replace the FPC Assembly Relay Key.
4. Replace Main PBA.



Problem Areas

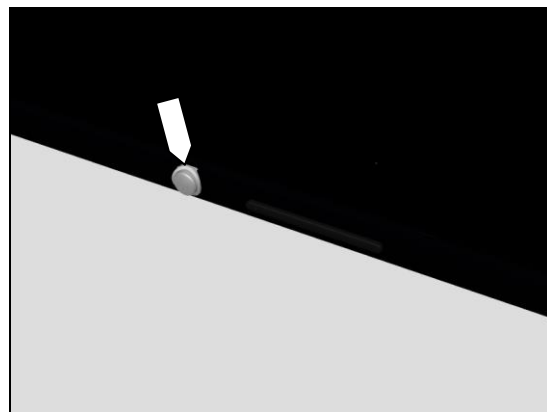
1.2.3 On/Off Key

Check:

Inspect the external area of the on/off key.

Action:

If dirty – clean it.

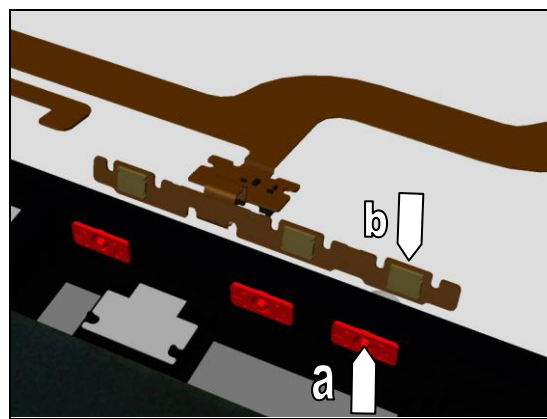


Check:

Inspect the Key Gasket of the on/off key (a) and key switch (b).

Action:

1. If dirty – clean them.



2. If the on/off key is damaged – replace the Frame Main Assembly.



3. If the on/off key switch is damaged – replace the FPC Assembly Relay Key.



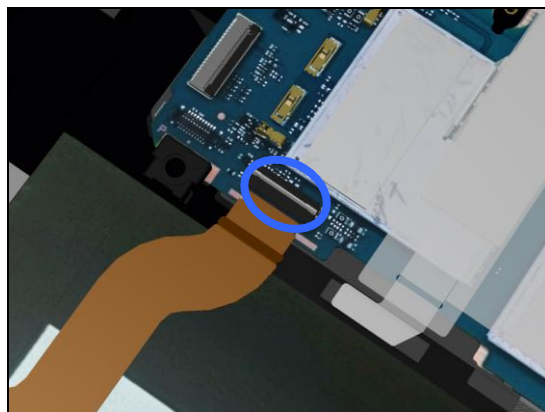
Problem Areas

Check:

Inspect the ZIF connector of the FPC Assembly Relay Key to Main PBA.

Action:

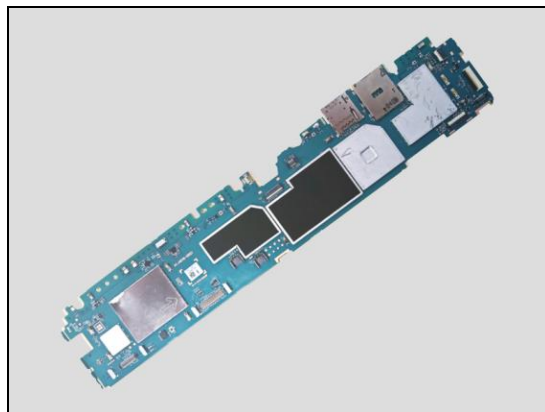
1. If not properly connected – disconnect and reconnect it.
2. If dirty or oxidized – clean it.



3. If the ZIF connector of the FPC Assembly Relay Key is damaged – replace the FPC Assembly Relay Key.



4. Replace Main PBA.



Problem Areas

1.3 Touch Screen

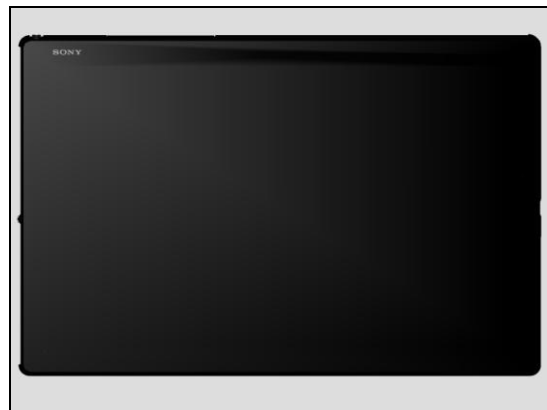
1.3.1 Touch Screen malfunction

Check:

Inspect the touch screen of the Display Assembly.

Action:

1. If dirty – clean it.
2. If scratched or damaged – replace the Display Assembly.

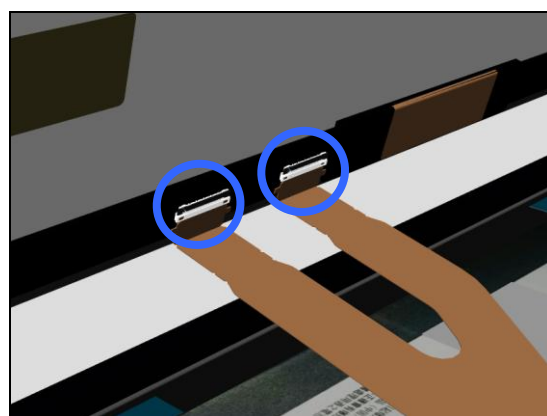


Check:

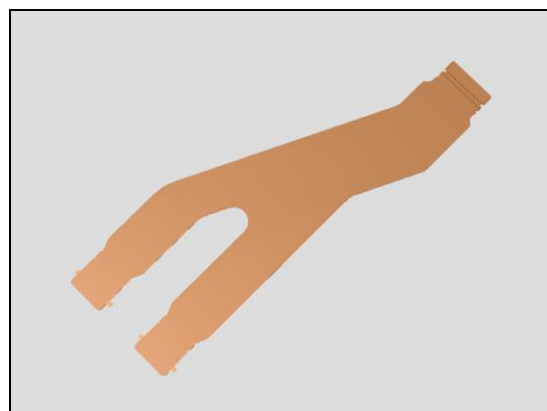
Inspect the ZIF connector of the FPC Assembly Relay LCD to Display Assembly.

Action:

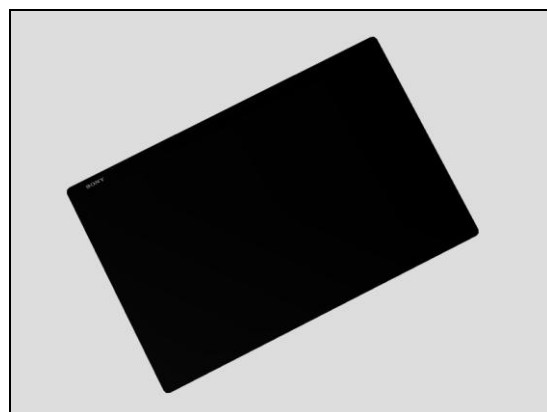
1. If not properly connected – disconnect and reconnect it.
2. If dirty or oxidized – clean the both sides of the BtB connector.



3. If the FPC or connector of FPC Assembly Relay LCD is damaged – replace FPC Assembly Relay LCD.



4. If the ZIF connector of Display Assembly is damaged – replace Display Assembly.



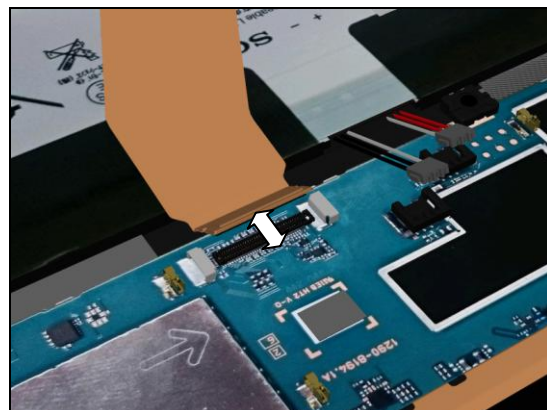
Problem Areas

Check:

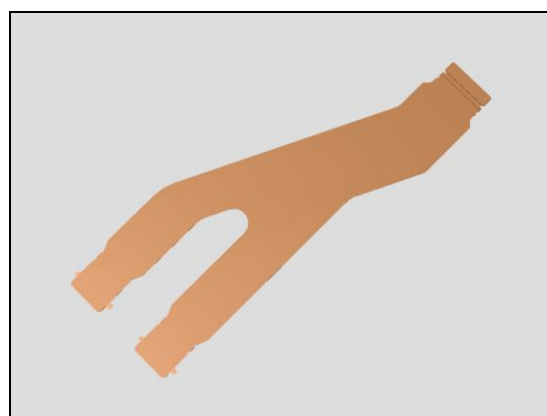
Inspect the BtB connector of the FPC Assembly Relay LCD to Main PBA.

Action:

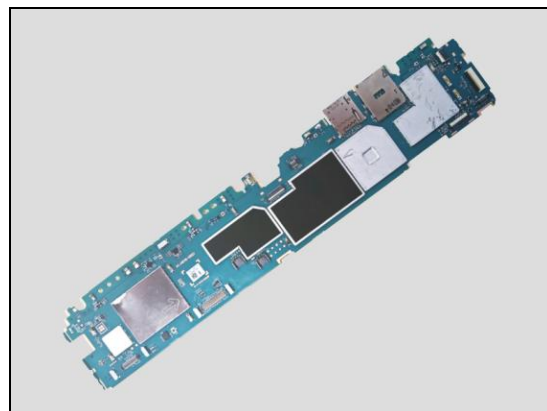
1. If not properly connected – disconnect and reconnect it.
2. If dirty or oxidized – clean the both sides of the BtB connector.



3. If the FPC or connector of FPC Assembly Relay LCD is damaged – replace FPC Assembly Relay LCD.



4. Replace Main PBA



Problem Areas

1.4 Display

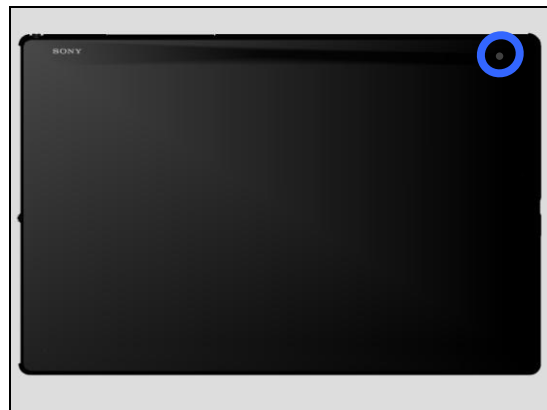
1.4.1 Graphics & Illumination

Check:

Check whether the phone vibrates after the on/off key has been pressed.

Action:

If the activation described above is not detected, refer to section 1.1 'Power'.

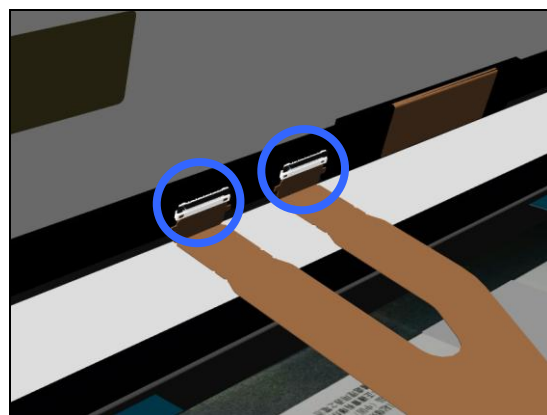


Check:

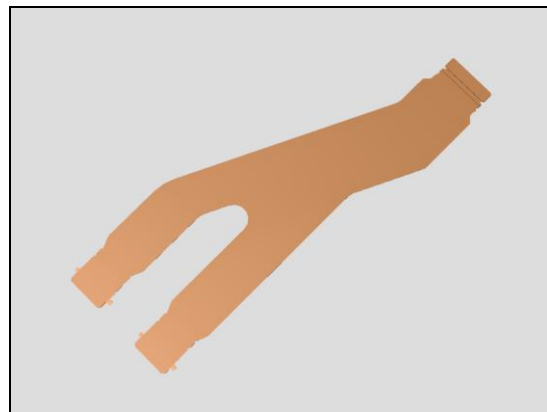
Inspect the ZIF connector of the FPC Assembly Relay LCD to Display Assembly.

Action:

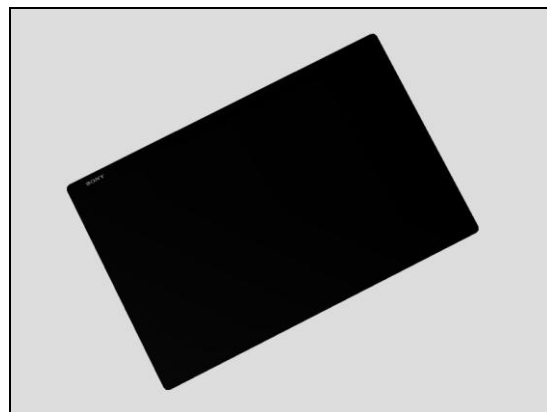
1. If not properly connected – disconnect and reconnect it.
2. If dirty or oxidized – clean the both sides of the BtB connector.



3. If the FPC or connector of FPC Assembly Relay LCD is damaged – replace FPC Assembly Relay LCD.



4. If the ZIF connector of Display Assembly is damaged – replace Display Assembly.



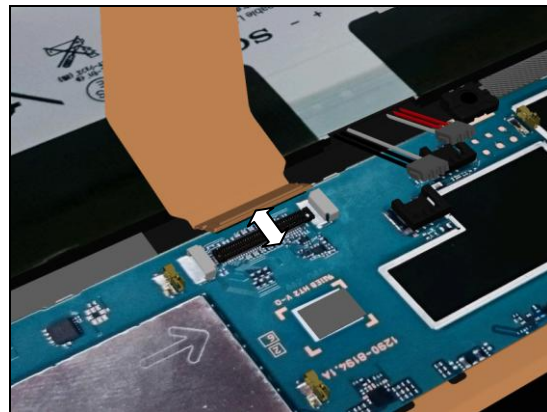
Problem Areas

Check:

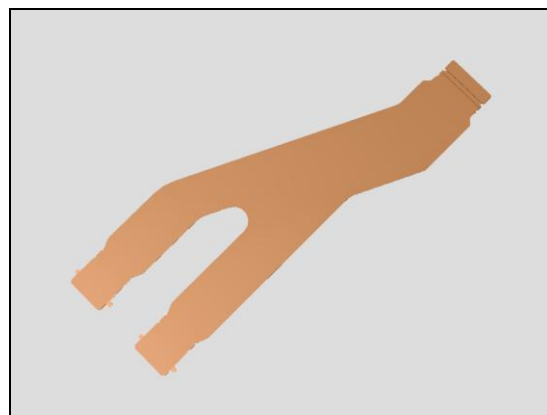
Inspect the BtB connector of the FPC Assembly Relay LCD to Main PBA.

Action:

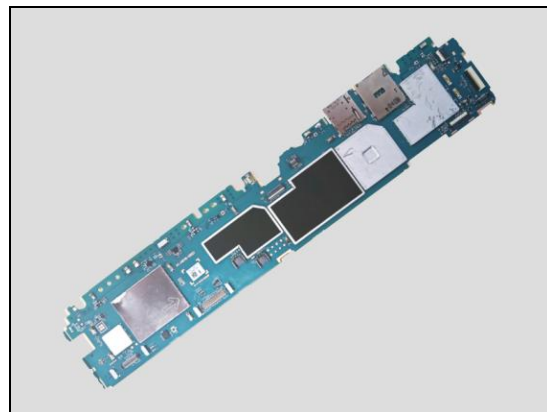
1. If not properly connected – disconnect and reconnect it.
2. If dirty or oxidized – clean the both sides of the BtB connector.



3. If the FPC or connector of FPC Assembly Relay LCD is damaged – replace FPC Assembly Relay LCD.



4. Replace Main PBA



Problem Areas

1.5 LED/Illumination

1.5.1 LED/Illumination

Check:

Inspect the external window area of the RGB LED on the Display Assembly.

Action:

1. If dirty – clean it.

2. If the external window area is damaged – replace the Display Assembly.

Check:

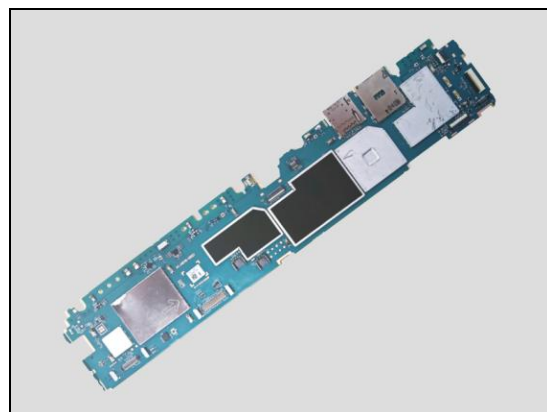
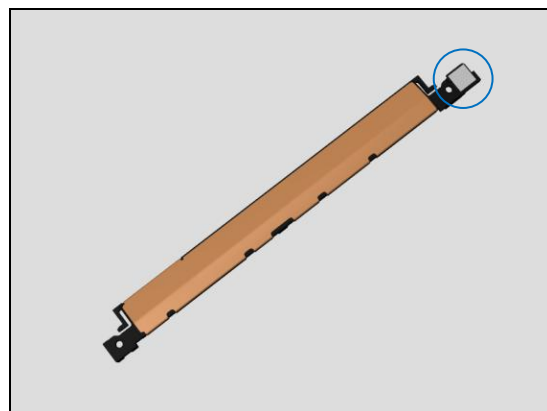
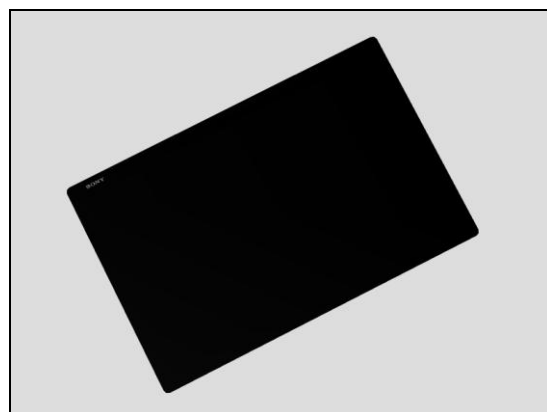
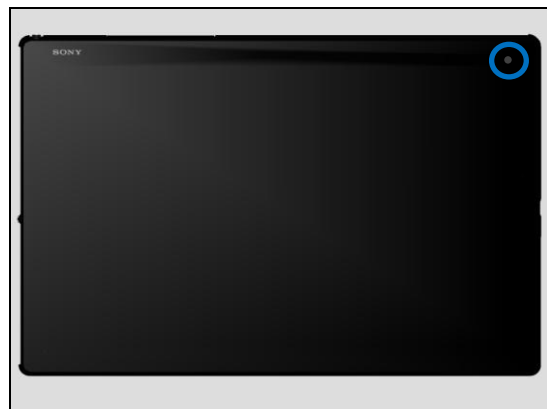
Inspect the RGB LED light guide on the Antenna Main.

Action:

1. If dirty – clean it.

2. If scratched or damaged – replace the Antenna Main.

3. If the RGB LED of Main PBA is damaged – replace Main PBA.



Problem Areas

1.6 Speaker

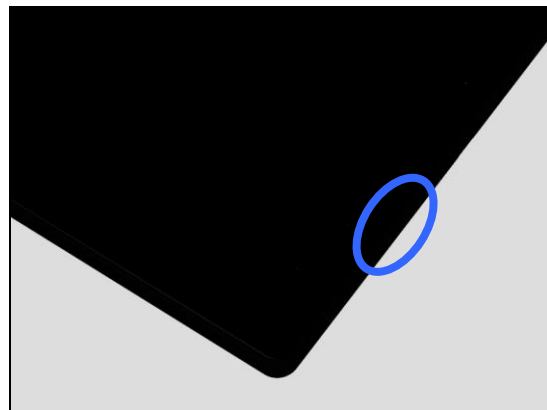
1.6.1 Top Speaker (Right channel)

Check:

Inspect the Top Speaker external port Right on the Display Assembly.

Action:

1. If the Top Speaker external port is clogged – clean it.



2. If the Top Speaker external port is damaged – replace the Frame Main Assembly.

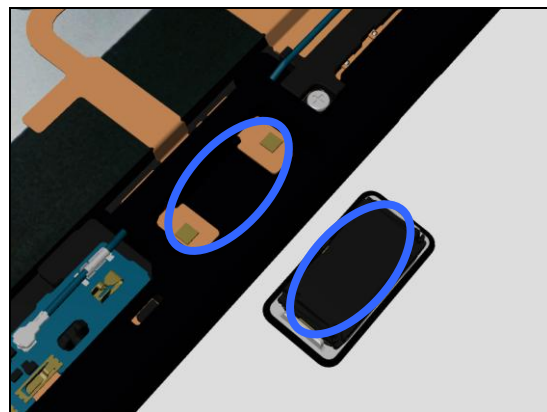


Check:

Inspect the contact pins of Top Speaker and the contact pads on the FPC Assembly Relay USB.

Action:

1. If dirty – clean them.

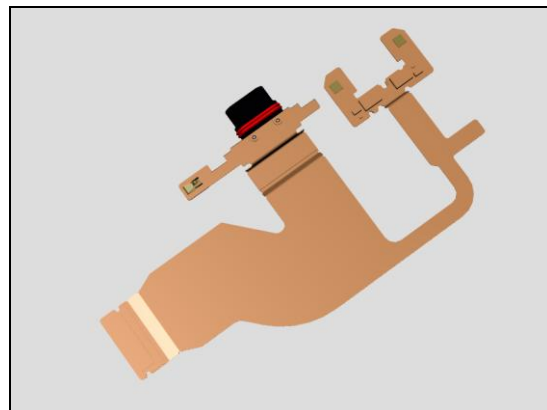


2. If the contact pins of Top Speaker are damaged – replace the Top Speaker.



Problem Areas

3. If the FPC Assembly Relay USB is damaged – replace it.



Check:

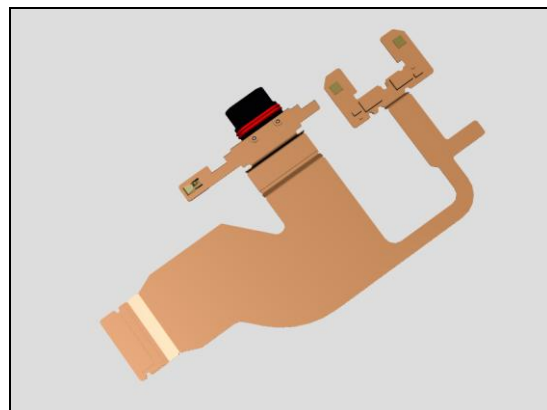
Inspect the BtB connector of FPC Assembly Relay USB to Main PBA.

Action:

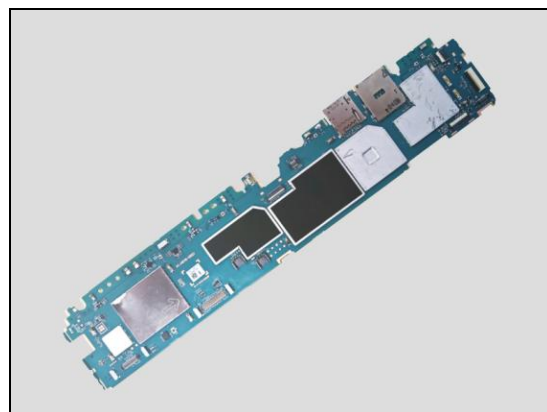
1. If not properly connected – disconnect and reconnect it.
2. If dirty or oxidized – clean the both sides of the BtB connector.



3. If the connector of FPC Assembly Relay USB is damaged – replace it.



4. Replace Main PBA.



Problem Areas

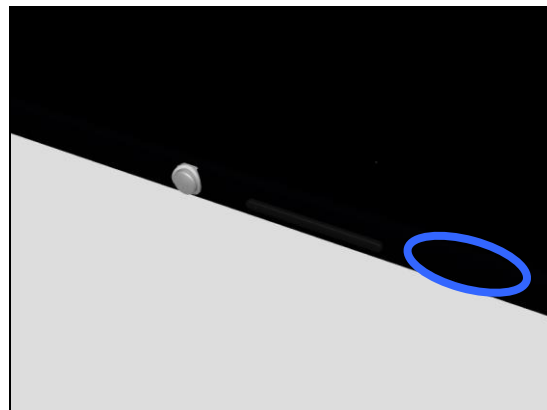
1.6.2 Top Speaker (Left channel)

Check:

Inspect the Top Speaker external port Left on the Display Assembly.

Action:

1. If the Top Speaker external port is clogged – clean it.



2. If the Top Speaker external port is damaged – replace the Frame Main Assembly.

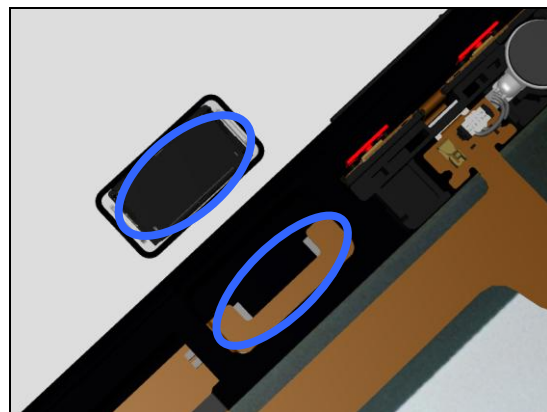


Check:

Inspect the contact pins of Top Speaker and the contact pads on the FPC Assembly Relay Key.

Action:

1. If dirty – clean them.



2. If the contact pins of Top Speaker are damaged – replace the Top Speaker.



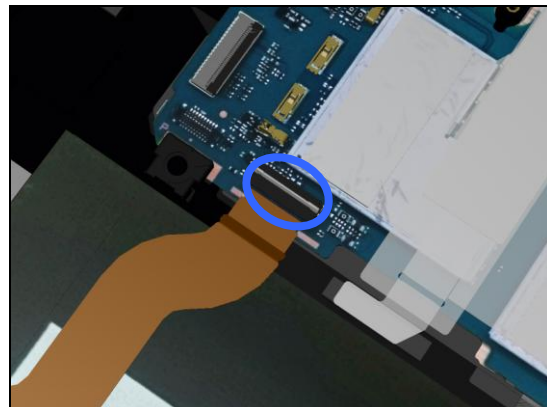
Problem Areas

Check:

Inspect the ZIF connector of the FPC Assembly Relay Key to Main PBA.

Action:

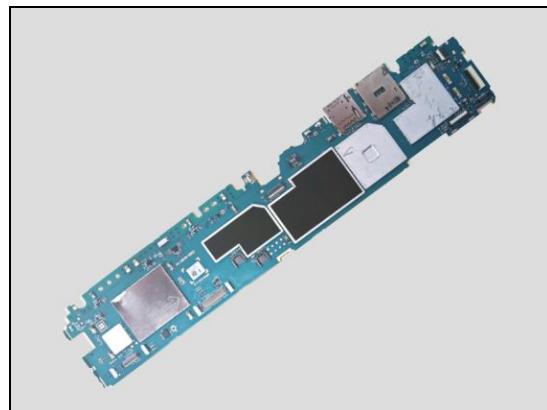
1. If not properly connected – disconnect and reconnect it.
2. If dirty or oxidized – clean it.



3. If the ZIF connector of the FPC Assembly Relay Key is damaged – replace the FPC Assembly Relay Key.



4. Replace Main PBA.



Problem Areas

1.7 Microphone

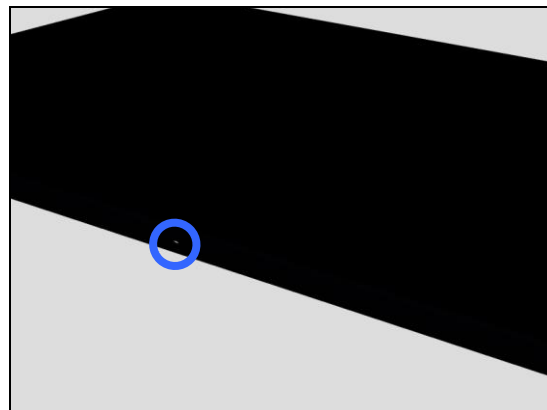
1.7.1 Microphone

Check:

Inspect the microphone's external port on the Frame Main Assembly.

Action:

1. If clogged – clean it.

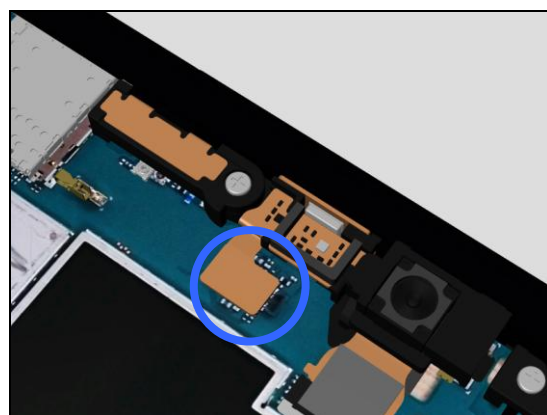


Check:

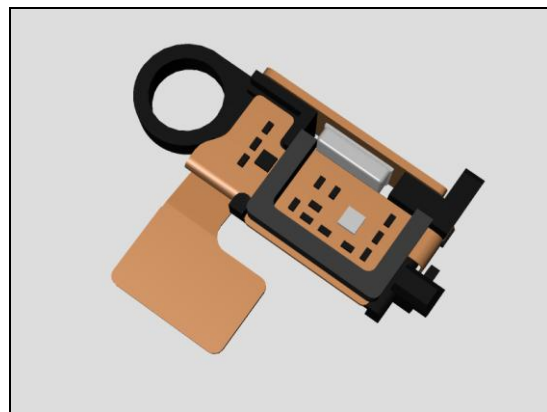
Inspect the BtB connector of FPC Assembly Sensor to Main PBA.

Action:

1. If not properly connected – disconnect and reconnect it.
2. If dirty or oxidized – clean the both sides of the BtB connector.



3. If the connector of FPC Assembly Sensor is damaged – replace FPC Assembly Sensor.

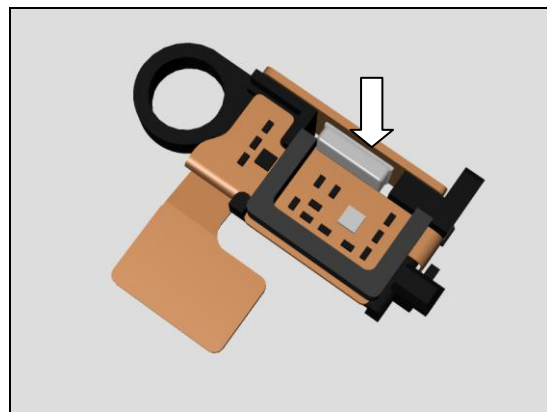


Check:

Inspect the microphone on the FPC Assembly Sensor.

Action:

1. If dirty – clean it.
2. If the microphone is damaged – replace FPC Assembly Sensor.
3. Replace Main PBA.



Problem Areas

1.8 Vibrator

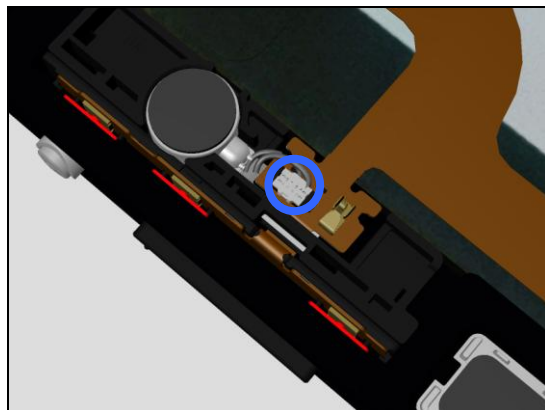
1.8.1 Vibrator not generating alerts

Check:

Inspect the connector of Vibrator to FPC Assembly Relay Key.

Action:

1. If not properly connected – disconnect and reconnect it.
2. If dirty or oxidized – clean it.



3. If the connector or Vibrator is damaged – replace the Vibrator.



2. If the connector or flex of FPC Assembly Relay Key is damaged – replace the FPC Assembly Relay Key.

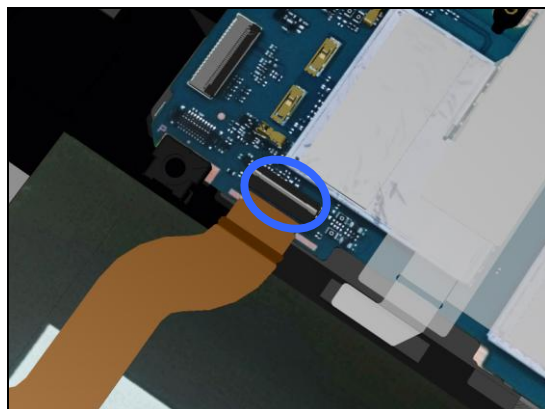


Check:

Inspect the ZIF connector of the FPC Assembly Relay Key to Main PBA.

Action:

1. If not properly connected – disconnect and reconnect it.
2. If dirty or oxidized – clean it.

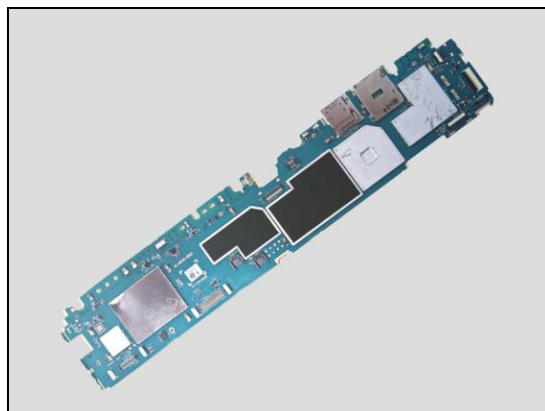


Problem Areas

2. If the connector of FPC Assembly Relay Key is damaged
– replace the FPC Assembly Relay Key.



3. Replace Main PBA.



Problem Areas

1.9 Camera

1.9.1 Camera defects

Check:

Inspect the external area of camera window.

Action:

1. If dirty – clean it.



2. If scratched or damaged – replace the Frame Main Assembly.

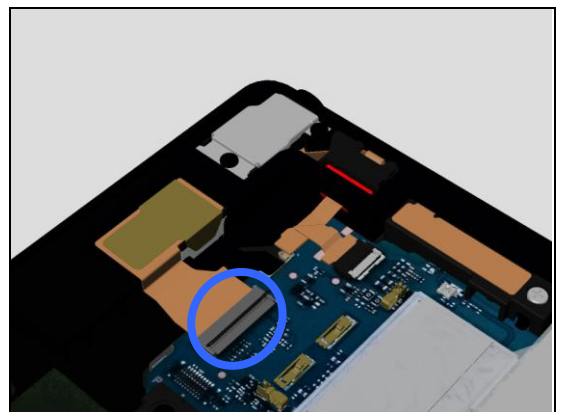


Check:

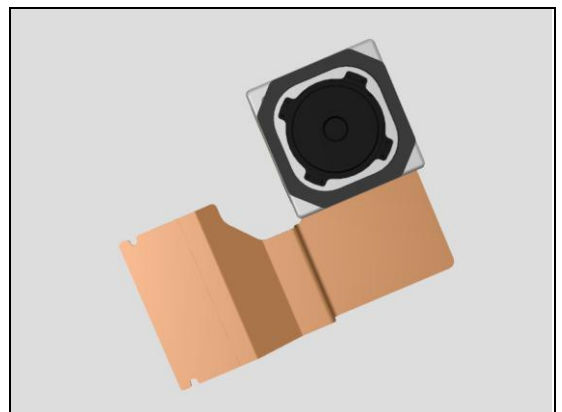
Inspect the ZIF connector of Camera Main 8 MPixel to Main PBA.

Action:

1. If not properly connected – disconnect and reconnect it.
2. If dirty or oxidized – clean the both sides of the BtB connector.



3. If the connector or the Camera Main 8 MPixel is damaged – replace the Camera Main 8 MPixel.
4. Replace Main PBA.



Problem Areas

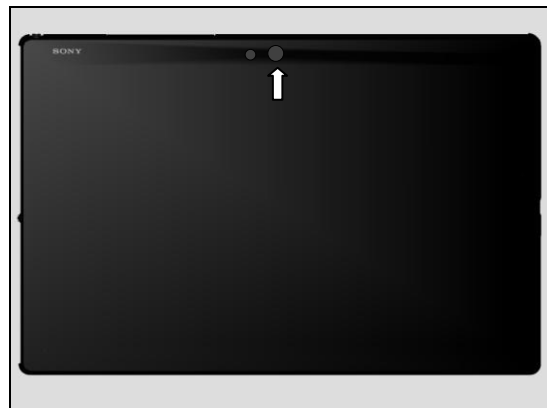
1.9.2 Video Call Camera defects

Check:

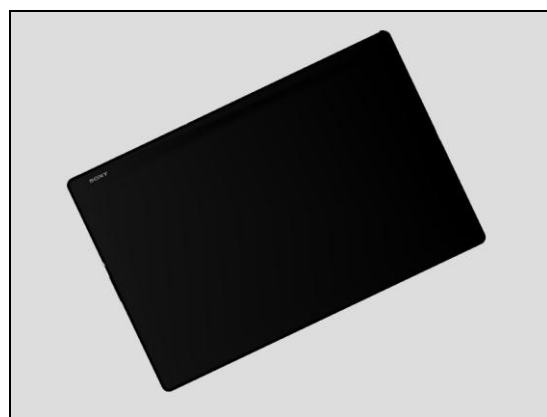
Inspect the external area of the video camera window.

Action:

1. If dirty – clean it.



2. If scratched or damaged – replace the Display Assembly.

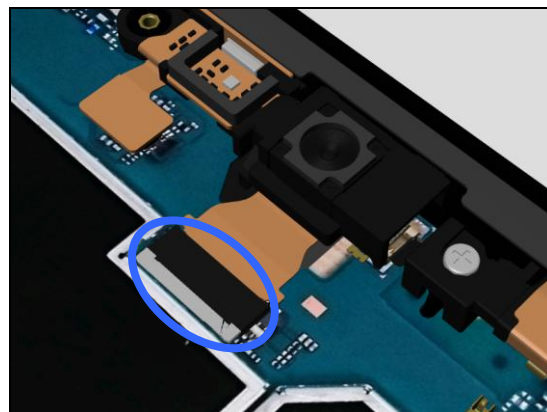


Check:

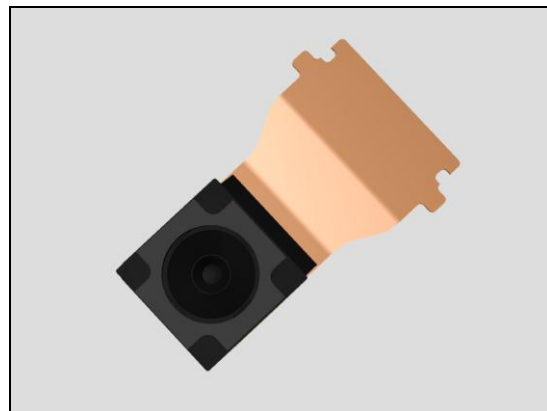
Inspect the BtB connector of Camera Chat 5 MPixel to the Main PBA.

Action:

1. If not properly connected – disconnect and reconnect it.
2. If dirty or oxidized – clean the both sides of the BtB connector.



2. If the BtB connector or Camera Chat 5 MPixel is damaged – replace the Camera Chat 5 MPixel.
3. Replace Main PBA.



Problem Areas

1.10 Antenna Switching

1.10.1 Antenna Switching fails

Action:

N/A

Problem Areas

1.11 Bluetooth and WLAN

1.11.1 Bluetooth or WLAN connection failure

Check:

Inspect the Antenna WLAN Main.

Action:

If the Antenna WLAN Main is damaged – replace it.

Check:

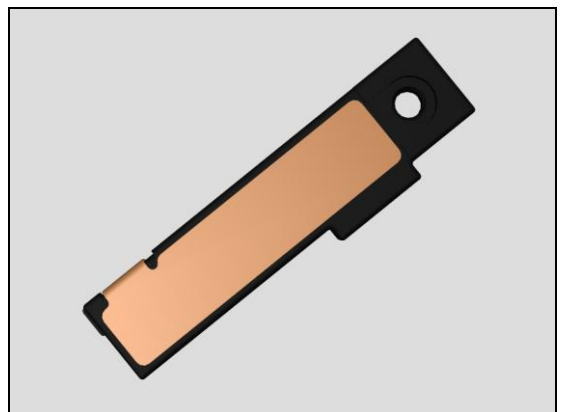
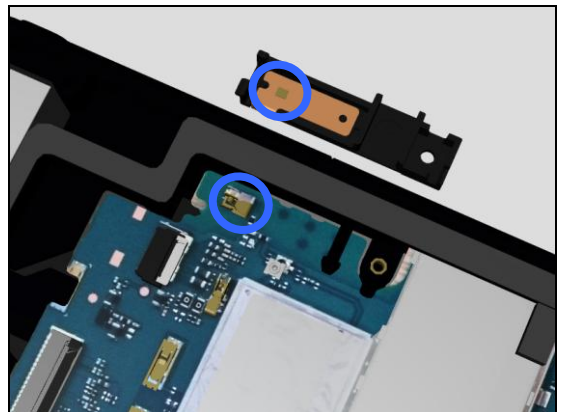
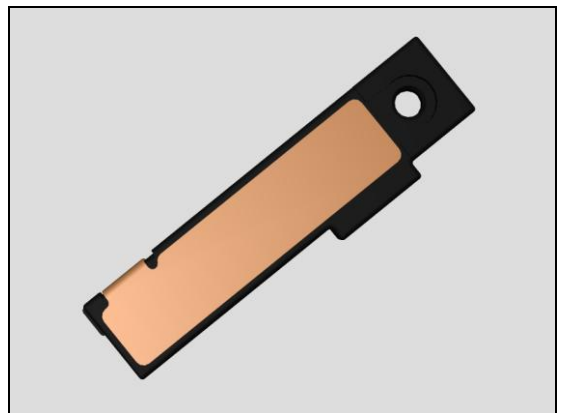
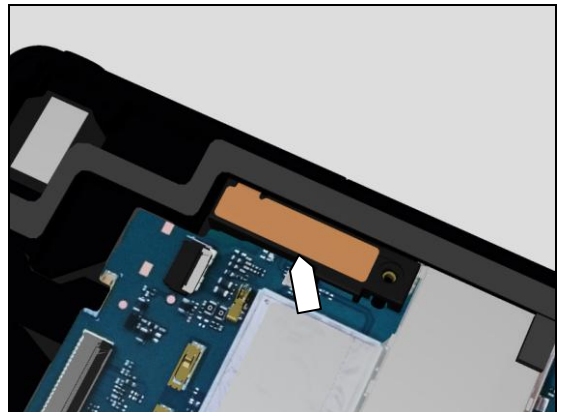
Inspect the Antenna WLAN Main contact pad and the contact pin on Main PBA.

Action:

1. If dirty or oxidized – clean the pads and pins.

2. If the contact pad is damaged – replace the Antenna WLAN Main.

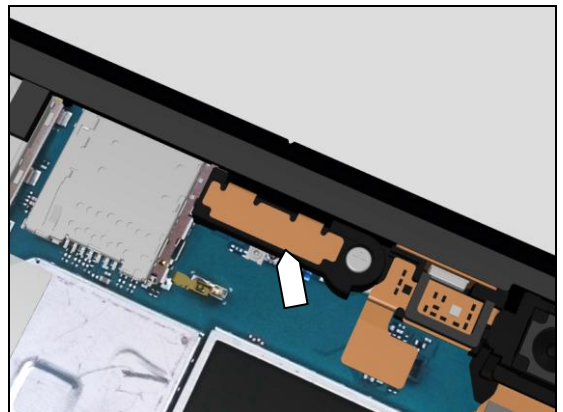
3. Replace Main PBA.



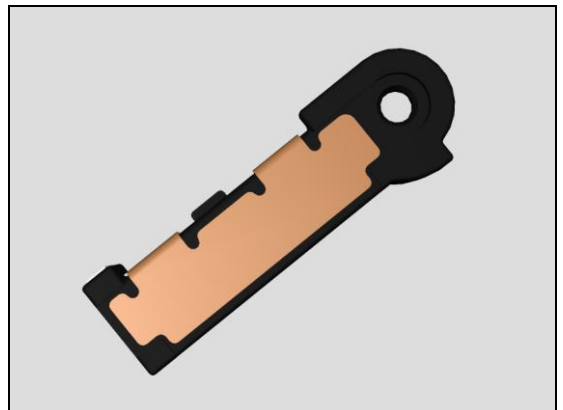
Problem Areas

Check:

Inspect the Antenna WLAN Sub.

**Action:**

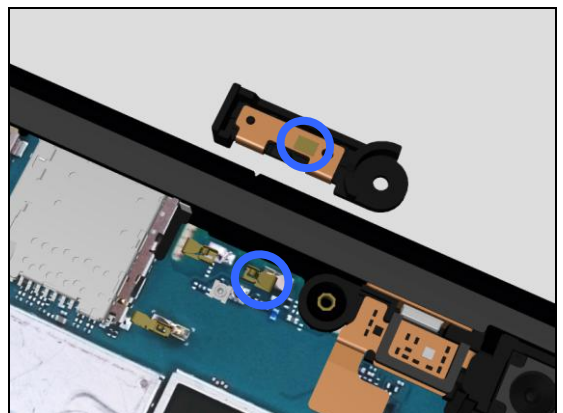
If the Antenna WLAN Sub is damaged – replace it.

**Check:**

Inspect the Antenna WLAN Sub contact pad and the contact pin on Main PBA.

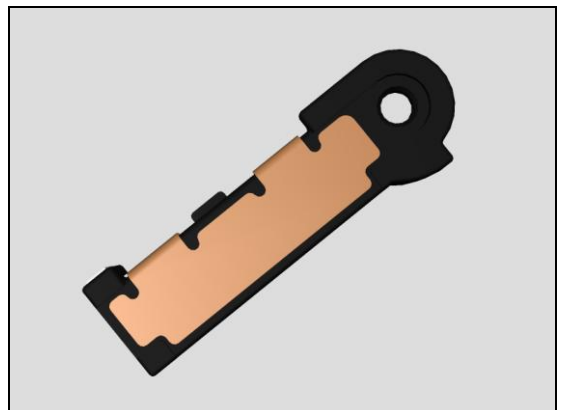
Action:

1. If dirty or oxidized – clean the pads and pins.



2. If the contact pad is damaged – replace the Antenna WLAN Sub.

3. Replace Main PBA.



Problem Areas

1.12 NFC

1.12.1 NFC malfunctions

Check:

Inspect the Antenna NFC.

Action:

If the antenna is damaged – replace the Antenna NFC.

Check:

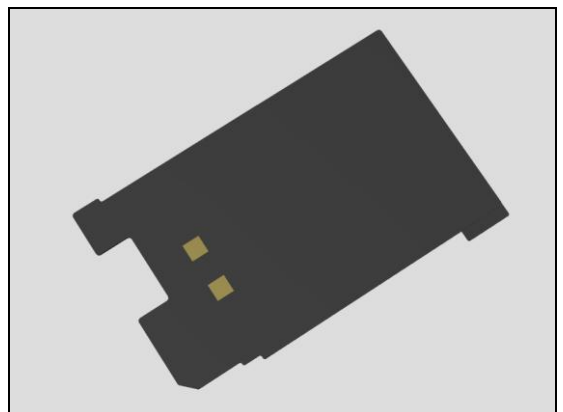
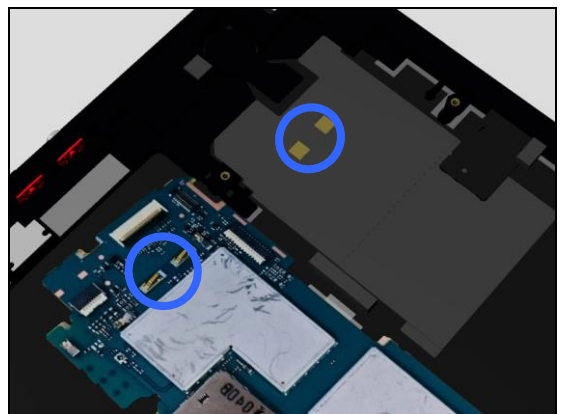
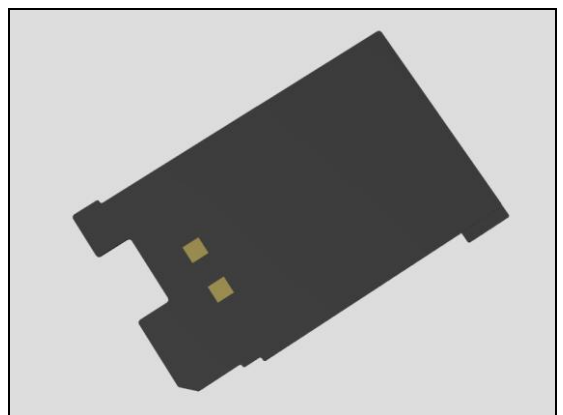
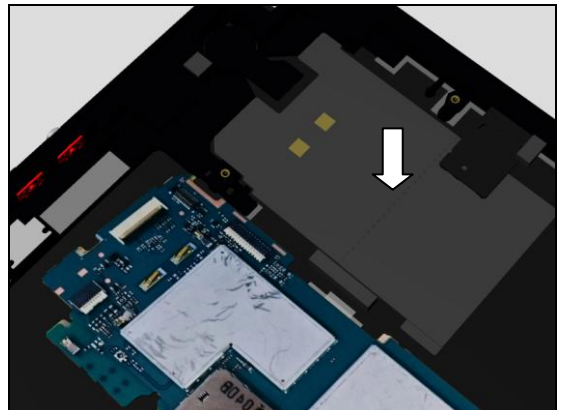
Inspect the contact pads of Antenna NFC to the contact pins on Main PBA.

Action:

1. If dirty or oxidized – clean the pads and pins.

2. If the contact pads are damaged – replace the Antenna NFC.

3. Replace Main PBA.



Problem Areas

1.13 GPS

1.13.1 GPS malfunctions

Check:

Inspect the Antenna Main.

Action:

If the Antenna Main is damaged – replace the Antenna Main.

Check:

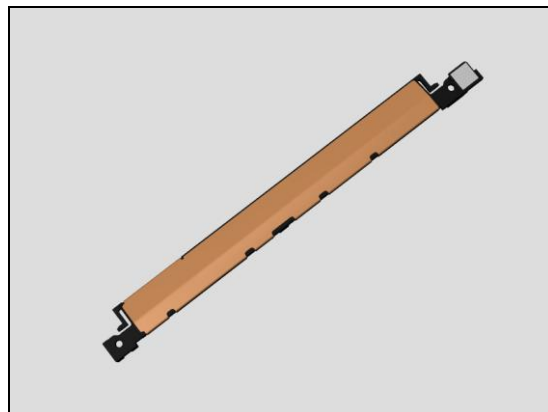
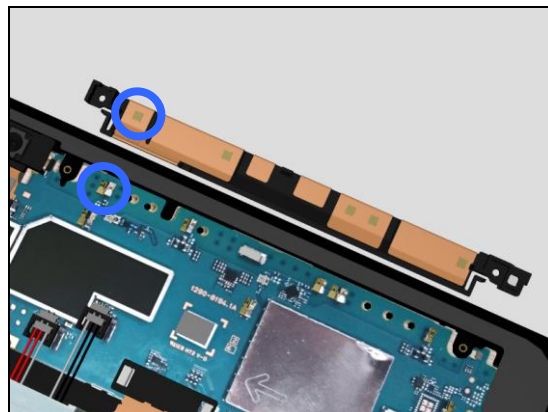
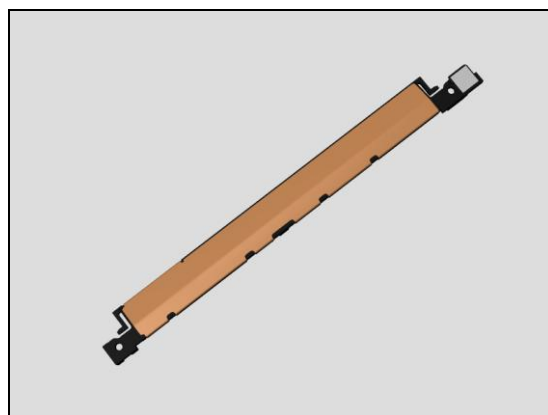
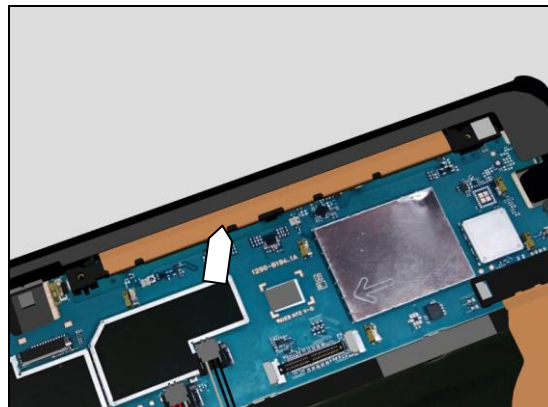
Inspect the Antenna Main contact pad and the contact pin on Main PBA.

Action:

1. If dirty or oxidized – clean the pad and pin.

2. If the contact pad is damaged – replace the Antenna Main.

3. Replace Main PBA.



Problem Areas

1.14 Compass

1.14.1 Compass test fails

Action:

1. Replace Main PBA.

Problem Areas

1.15 Accelerometer

1.15.1 Accelerometer test fails

Action:

1. Follow the calibrations in Sony Mobile Repair Application
1289-2983 – mechanical
2. Replace Main PBA.

Problem Areas

1.16 Gyroscope

1.16.1 Gyroscope test fails

Action:

1. Follow the calibrations in Sony Mobile Repair Application
1289-2983 – mechanical
2. Replace Main PBA.

Problem Areas

1.17 Ambient Light Sensor

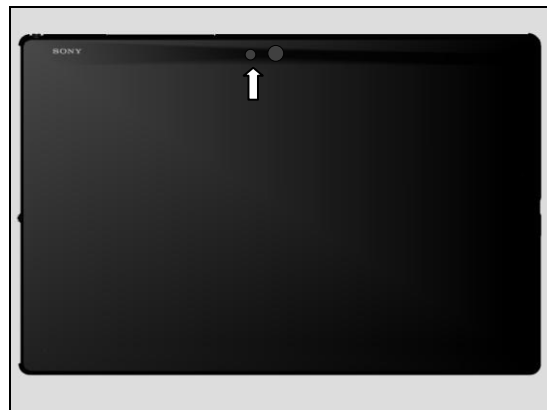
1.17.1 Light sensor malfunctions

Check:

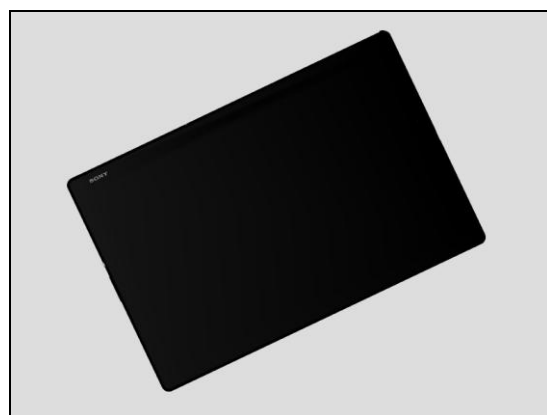
Inspect the external area of the video camera window.

Action:

1. If dirty – clean it.



2. If scratched or damaged – replace the Display Assembly.

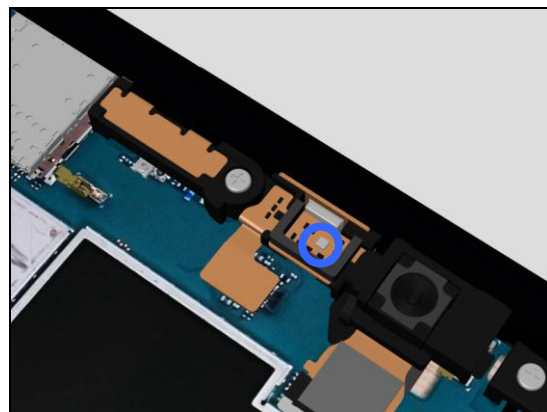


Check:

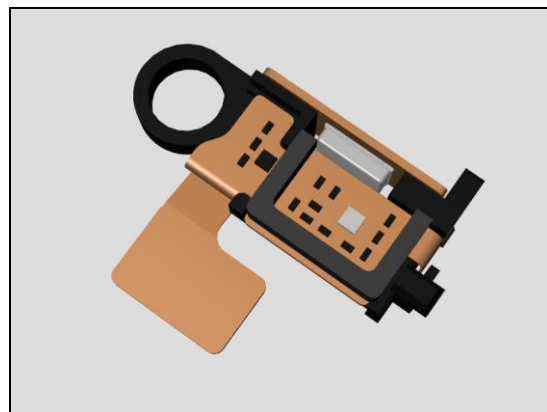
Inspect the light sensor on the FPC Assembly Sensor.

Action:

1. If dirty – clean it.



2. If damaged – replace the FPC Assembly Sensor.



Problem Areas

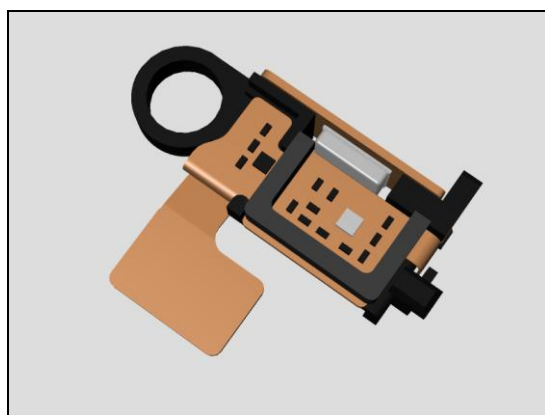
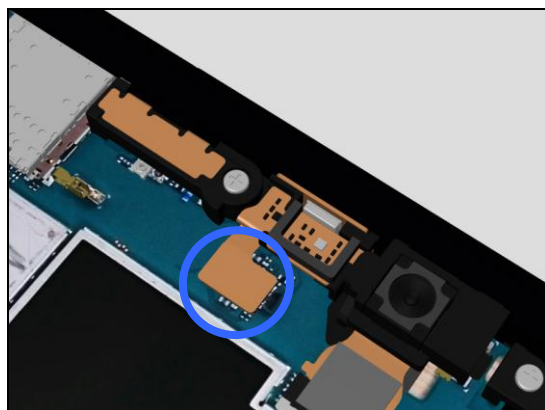
Check:

Inspect the BtB connector of FPC Assembly Sensor to Main PBA.

Action:

1. If not properly connected – disconnect and reconnect it.
2. If dirty or oxidized – clean the both sides of the BtB connector.

3. If the connector of FPC Assembly Sensor is damaged – replace FPC Assembly Sensor.
4. Replace Main PBA.



Problem Areas

1.18 Proximity Sensor Back (N/A SGP712)

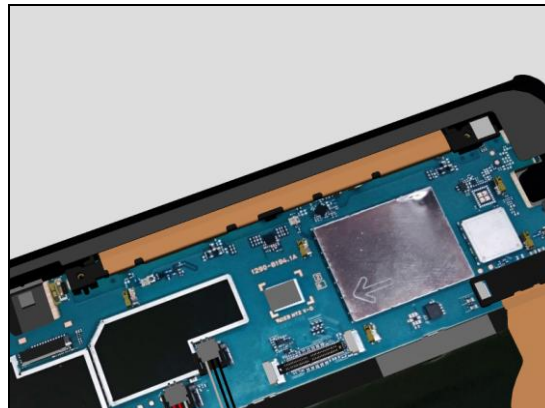
1.18.1 Proximity Sensor Back malfunctions

Action:

1. Follow the calibrations in Sony Mobile Repair Application 1289-2983 – mechanical

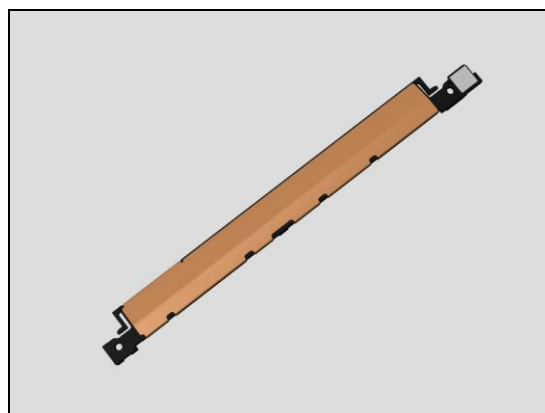
Check:

Inspect the Antenna Main.



Action:

If the Antenna Main is damaged – replace the Antenna Main.

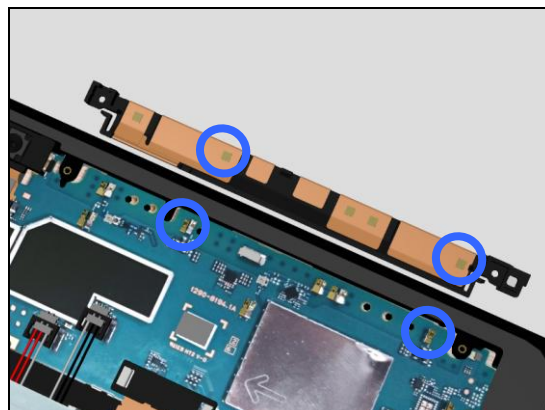


Check:

Inspect the Antenna Main contact pads and the contact pins on Main PBA.

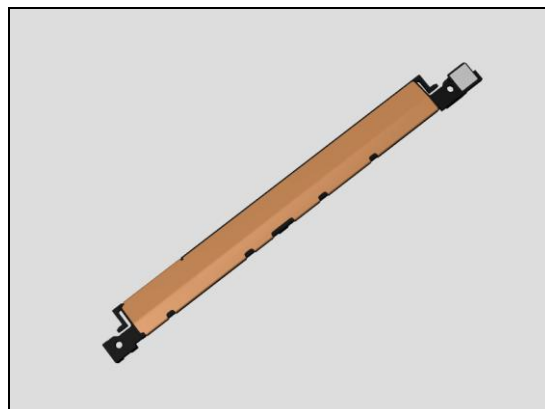
Action:

1. If dirty or oxidized – clean the pads and pins.



2. If the contact pads are damaged – replace the Antenna Main.

3. Replace Main PBA.



Problem Areas

1.19 Hall Element

1.19.1 Hall Element test fails

Check:

Inspect the hall sensor on the FPC Assembly Sensor.

Action:

If the hall sensor is damaged – replace the FPC Assembly Sensor.

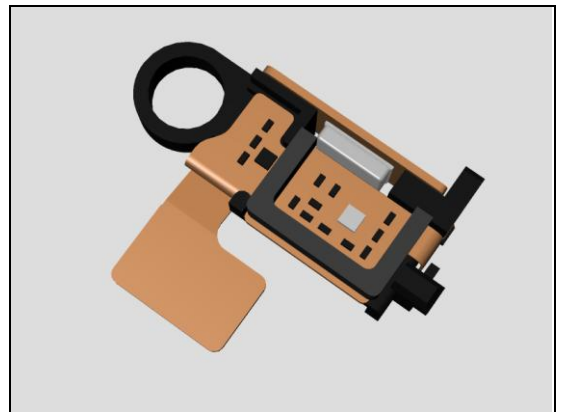
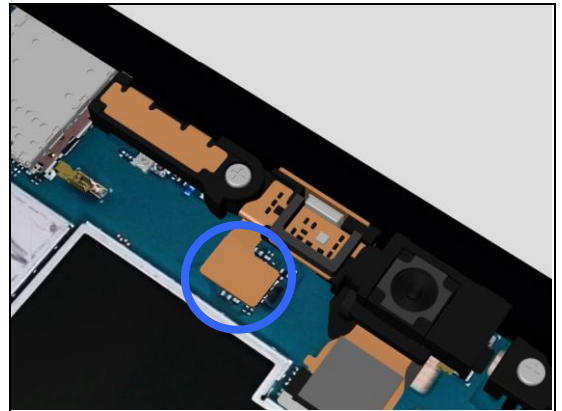
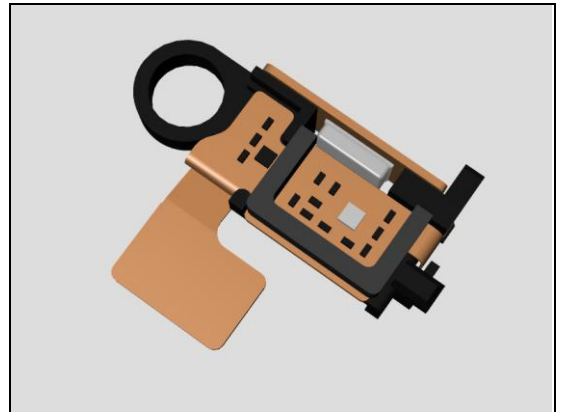
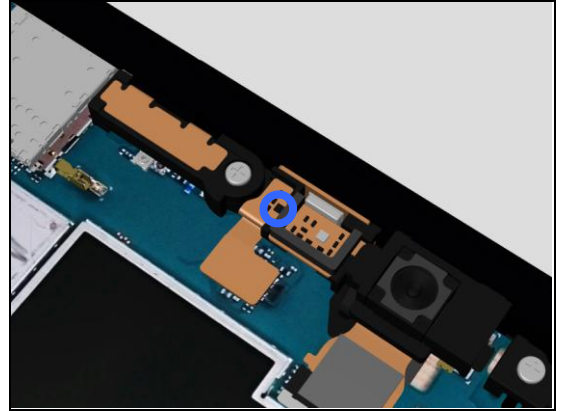
Check:

Inspect the BtB connector of FPC Assembly Sensor to Main PBA.

Action:

1. If not properly connected – disconnect and reconnect it.
2. If dirty or oxidized – clean the both sides of the BtB connector.

3. If the connector of FPC Assembly Sensor is damaged – replace FPC Assembly Sensor.
4. Replace Main PBA.



Problem Areas

1.20 Real Time Clock

1.20.1 Real time clock test fails

Action:

Replace Main PBA.

Problem Areas

1.21 Total call time (N/A SGP712)

1.21.1 Total call time fails

Action:

Replace Main PBA.

Problem Areas

1.22 Storage

1.22.1 Memory Card not detected

Action:

Replace Main PBA.

Problem Areas

1.23 Security

1.23.1 Security fails

Action:

Replace Main PBA.

Problem Areas

1.24 FM Radio

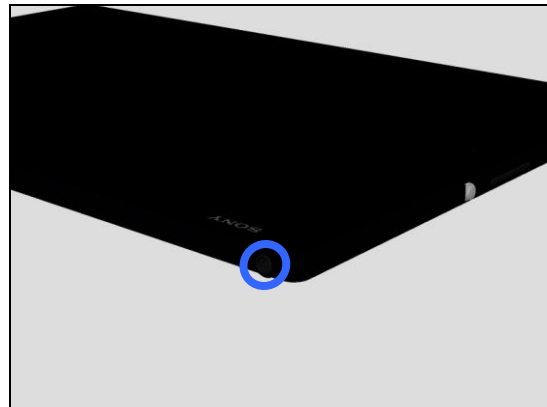
1.24.1 No/Poor FM Radio reception

Check:

Inspect the external port of the Audio Jack.

Action:

If dirty or oxidized – clean it.

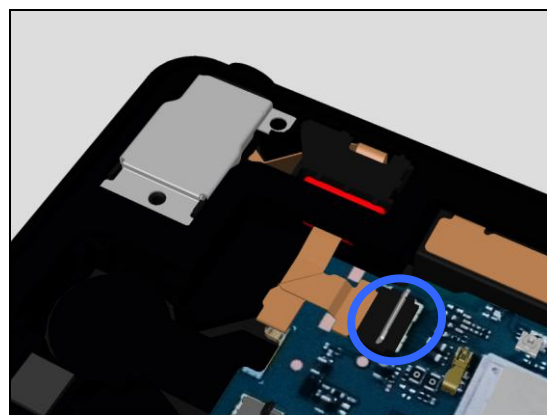


Check:

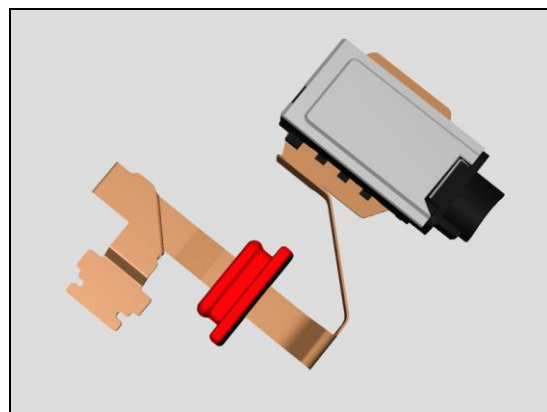
Inspect the ZIF connector of FPC Assembly Audio Jack to Main PBA.

Action:

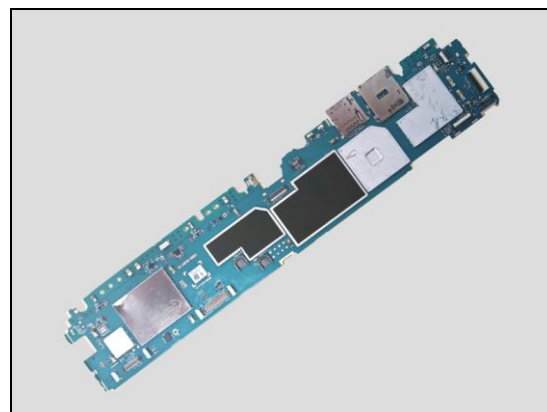
1. If not properly connected – disconnect and reconnect it.
2. If dirty or oxidized – clean the both sides of the ZIF connector.



3. If the ZIF connector or the Audio Jack is damaged – replace the FPC Assembly Audio Jack.



4. Replace Main PBA.



Problem Areas

1.25 Battery test

1.25.1 Battery test fails

Action:

Replace Main PBA.

Problem Areas

1.26 Verify Certificates

1.26.1 Verify Certificates fails

Action:

Replace Main PBA.

Problem Areas

1.27 TV-Out Test

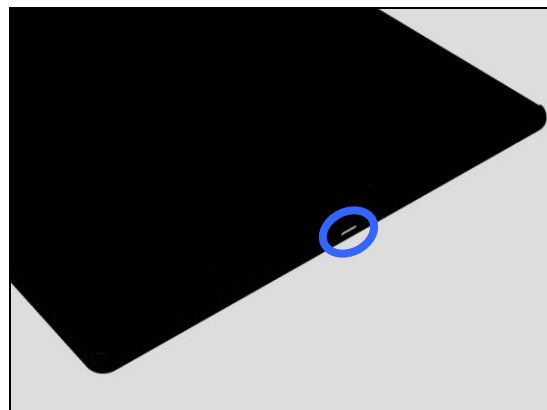
1.27.1 TV-Out test fails

Check:

Inspect the external port of USB connector.

Action:

1. If dirty or oxidized – clean the connector.

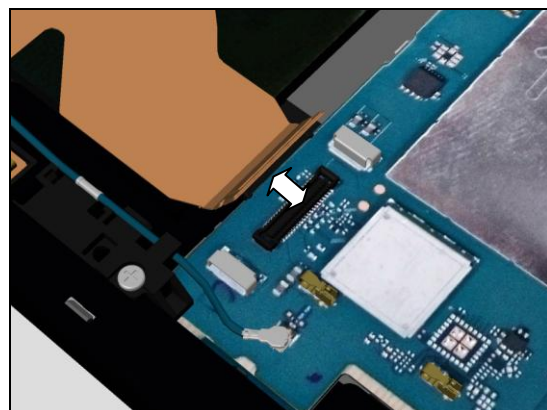


Check:

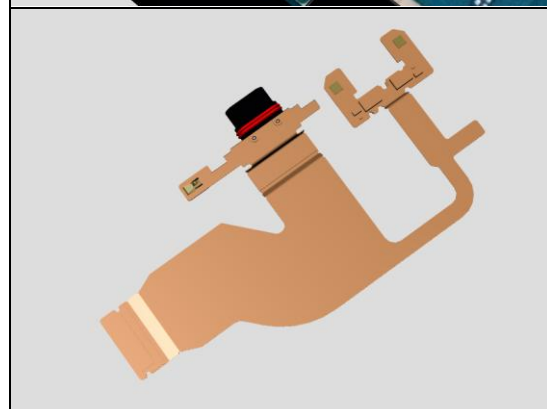
Inspect the BtB connector of FPC Assembly Relay USB to Main PBA.

Action:

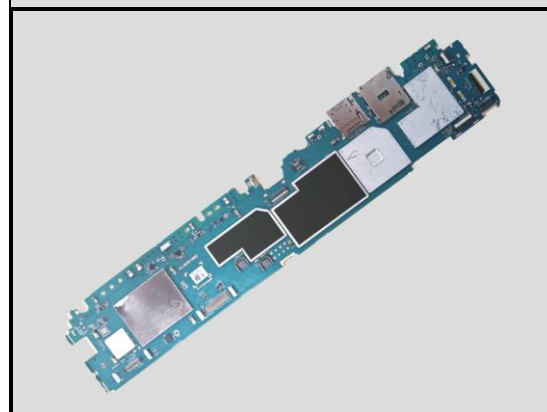
1. If not properly connected – disconnect and reconnect it.
2. If dirty or oxidized – clean the both sides of the BtB connector.



3. If the connector of FPC Assembly Relay USB is damaged – replace it.



4. Replace Main PBA.



Problem Areas

1.28 Network & Signal (N/A SGP712)

1.28.1 No/Poor signal

Check:

Inspect the contact pads on Antenna Main and pins on Main PBA.

Action:

1. If dirty or oxidized – clean the pins and pads.

2. If the contact pads are damaged – replace the Antenna Main.

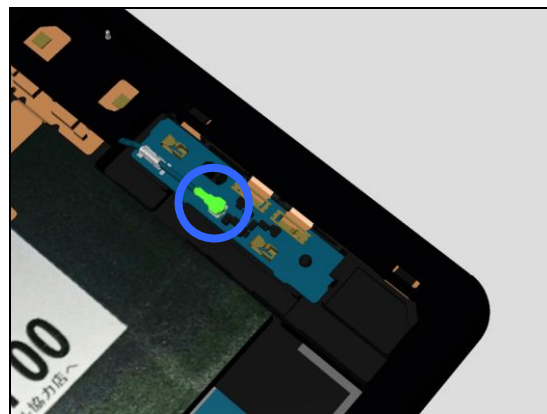
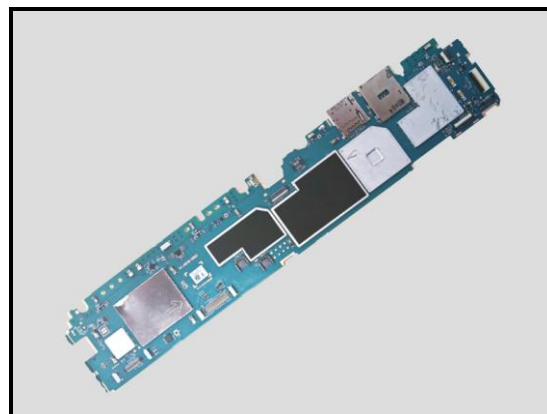
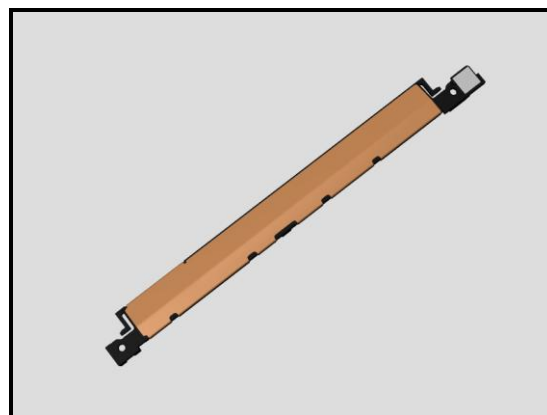
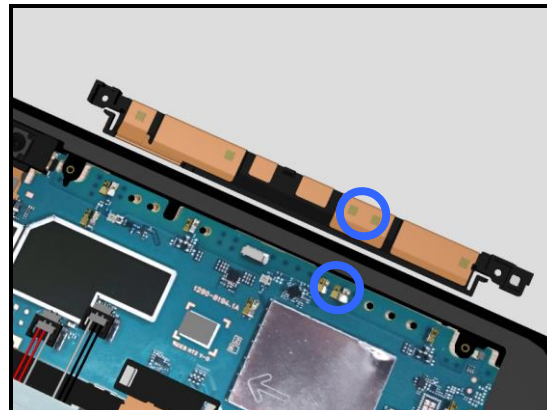
3. Replace Main PBA.

Check:

Inspect the connector of Cable RF Coax to Sub PBA.

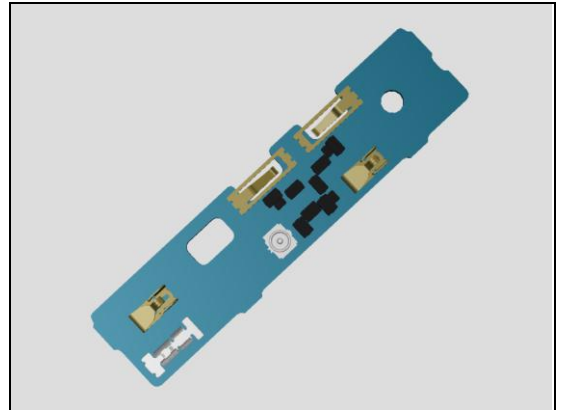
Action:

1. If not properly connected – disconnect and reconnect it.



Problem Areas

2. If the connector on Sub PBA is damaged – replace it.

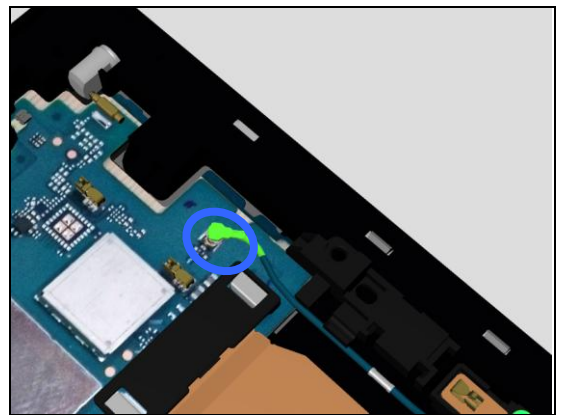


Check:

Inspect the connector of Cable RF Coax to Main PBA.

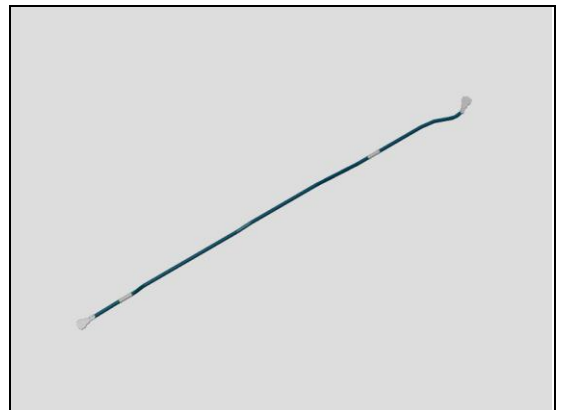
Action:

1. If not properly connected – disconnect and reconnect it.



2. If the Cable RF Coax or either of the both connectors is damaged – replace the Cable RF Coax.

3. Replace Main PBA.

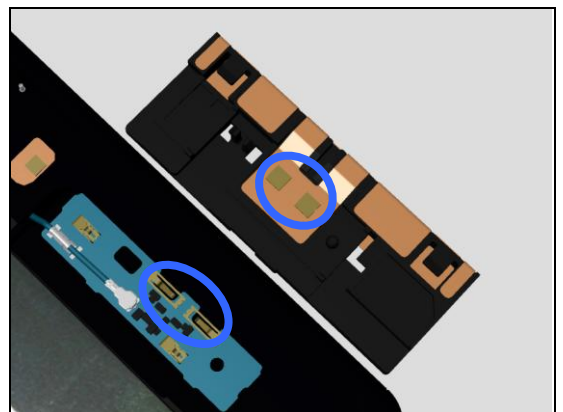


Check:

Inspect the contact pins on Sub PBA and contact pads on Sub Antenna.

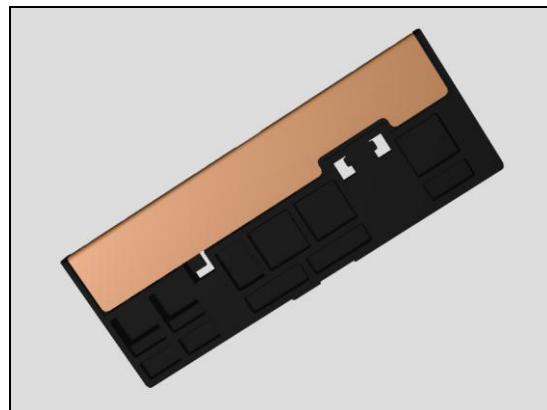
Action:

1. If dirty or oxidized – clean the pins and pads.

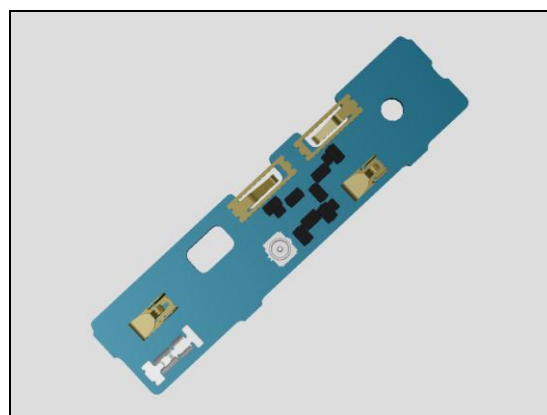


Problem Areas

2. If the contact pads on Sub Antenna are damaged – replace the Sub Antenna.



3. Replace Sub PBA.



Problem Areas

1.29 SIM (N/A SGP712)

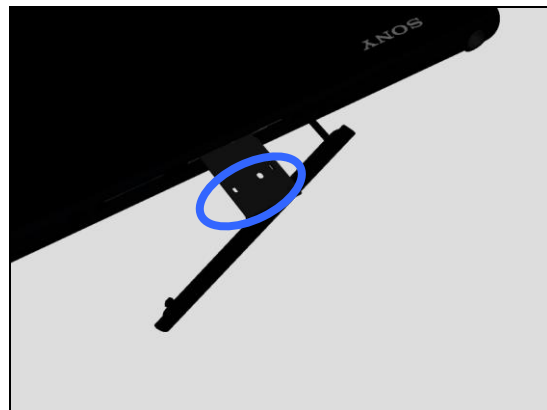
1.29.1 SIM not detected

Check:

Inspect the external port of the SIM Tray and check if a SIM card can be properly inserted.

Action:

If dirty or clogged – clean the external port.

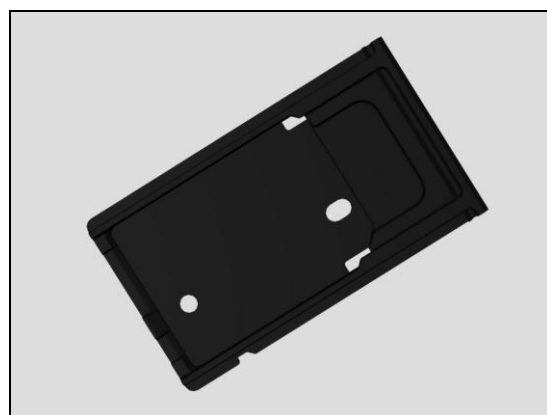


Check:

Inspect the SIM Tray.

Action:

1. If dirty – clean it.
2. If damaged – replace it.

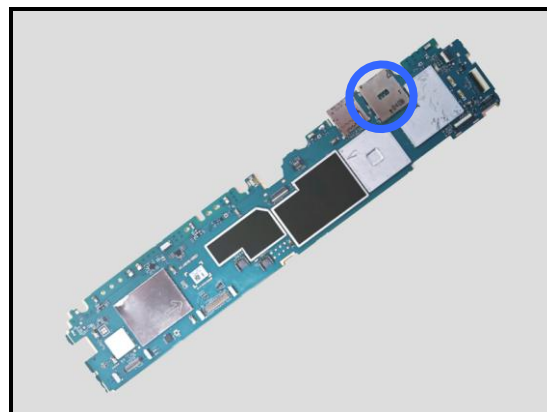


Check:

Inspect the SIM card holder on Main PBA.

Action:

1. If dirty or clogged – clean the holder.
2. Replace Main PBA.



1.29.2 Incorrect UIM or SIM indicated

Check:

Check whether the phone is locked to a particular operator and whether the correct operator UIM or SIM is being used.

Action:

1. Use a proper operator UIM/SIM or test UIM/SIM.
2. Replace Main PBA.



Problem Areas

1.30 Charging

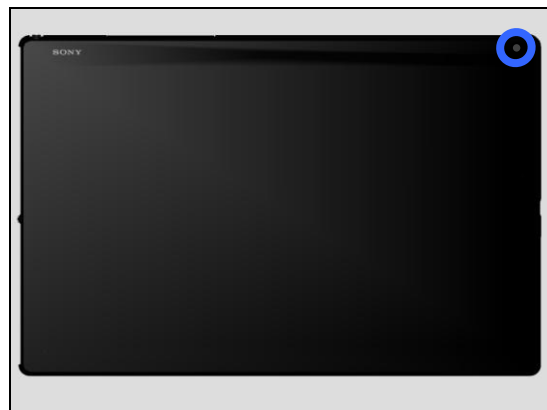
1.30.1 Battery will not charge by USB connector

Check:

Check whether the Notification LED blinks by pressing the on/off key.

Action:

Refer to section 1.1.1 'Will not power on or will switch off randomly'.

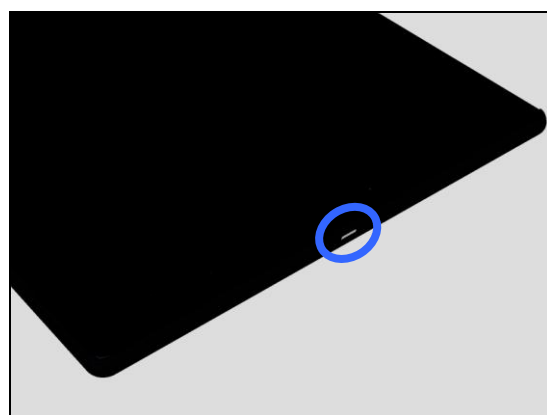


Check:

Inspect the external port of USB connector.

Action:

1. If dirty or oxidized – clean the connector.

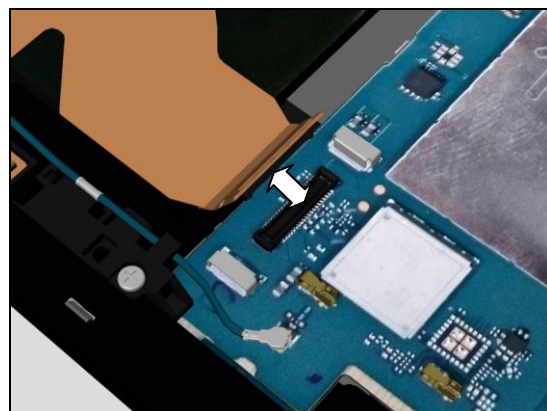


Check:

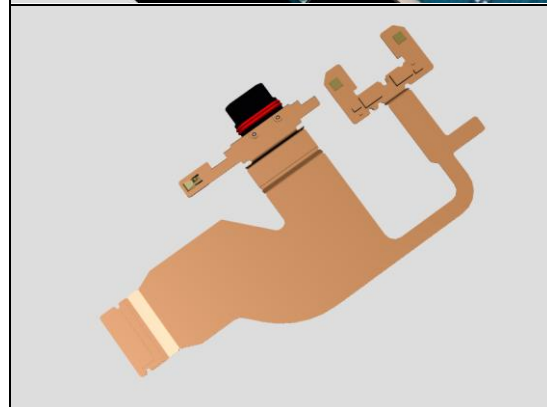
Inspect the BtB connector of FPC Assembly Relay USB to Main PBA.

Action:

1. If not properly connected – disconnect and reconnect it.
2. If dirty or oxidized – clean the both sides of the BtB connector.



3. If the connector of FPC Assembly Relay USB is damaged – replace it.



Problem Areas

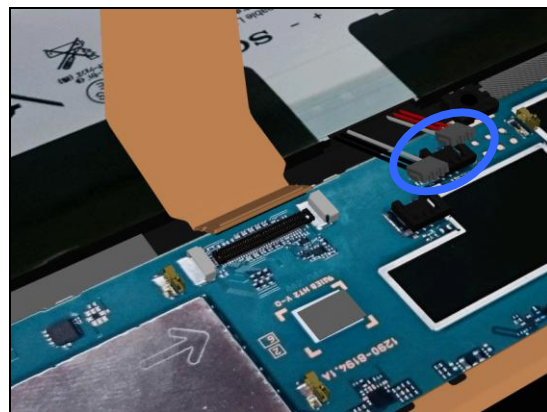
Check:

Inspect the connectors of the Battery 6000.0 mAh to Main PBA.

Action:

1. If not properly connected – disconnect and reconnect it.
2. If dirty or oxidized – clean the both sides of the connectors.

3. If the Battery 6000.0 mAh is damaged – replace Battery 6000.0 mAh.
4. Replace Main PBA.



Problem Areas

1.31 HandsFree by Wire

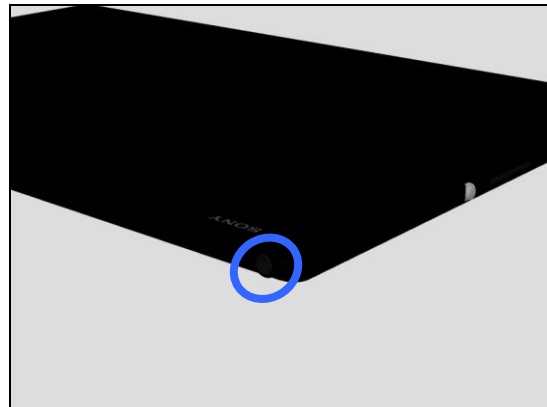
1.31.1 Connection to portable Handsfree fails

Check:

Inspect the external port of the Audio Jack.

Action:

If dirty or oxidized – clean the connector.

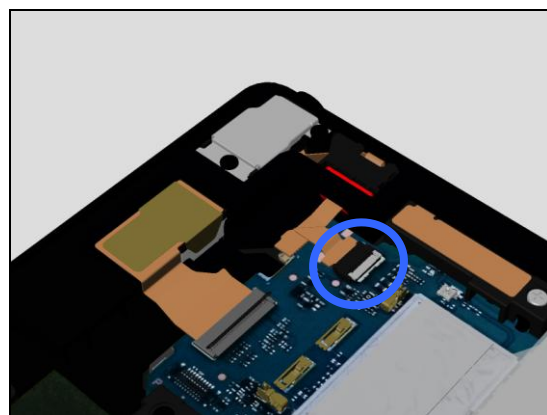


Check:

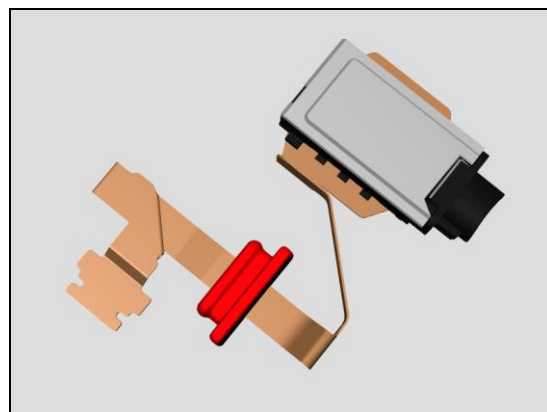
Inspect the ZIF connector of FPC Assembly Audio Jack to Main PBA.

Action:

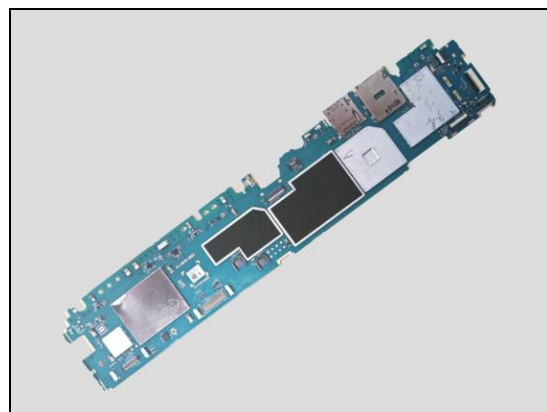
1. If not properly connected – disconnect and reconnect it.
2. If dirty or oxidized – clean the both sides of the ZIF connector.



3. If FPC Assembly Audio Jack is damaged – replace the FPC Assembly Audio Jack.



4. Replace Main PBA.



Problem Areas

1.32 Data Communication

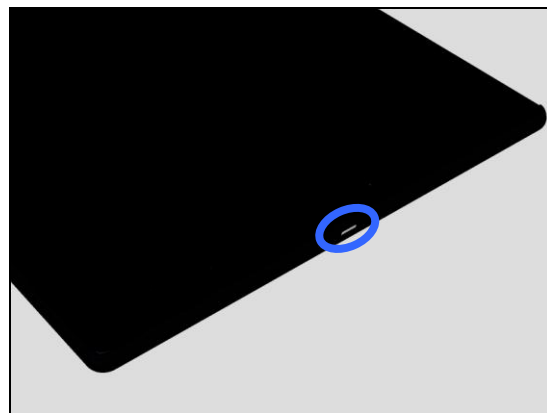
1.32.1 Data transfer via System Connector fails

Check:

Inspect the USB connector.

Action:

1. If dirty or oxidized – clean the connector.

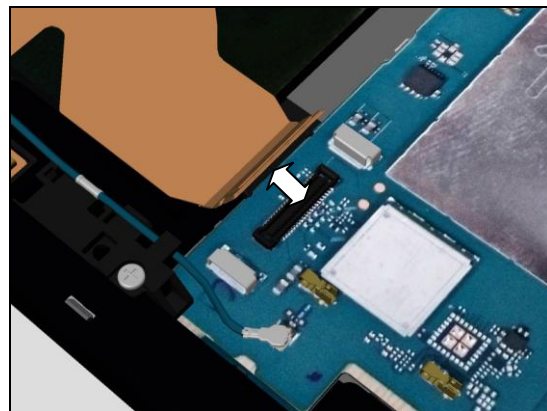


Check:

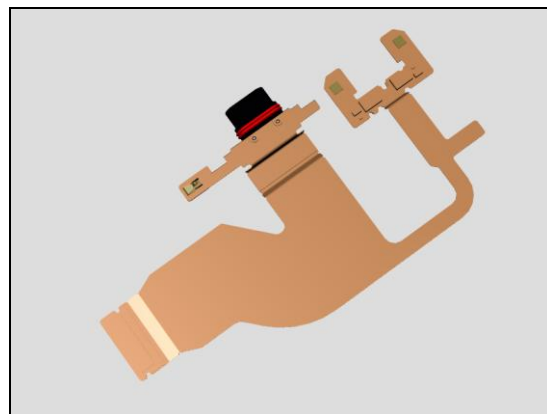
Inspect the BtB connector of FPC Assembly Relay USB to Main PBA.

Action:

1. If not properly connected – disconnect and reconnect it.
2. If dirty or oxidized – clean the both sides of the BtB connector.



3. If the connector of FPC Assembly Relay USB is damaged – replace it.
4. Replace Main PBA.



Problem Areas

1.33 Water Resistance

1.33.1 Water Resistance fails

Follow the chapter 1.1 in 1297-2736 Test Instruction – mechanical for the sealing process

Inspect all the Top Speaker's external ports (both sides)

Action:

1. If dirty – clean it.
2. Replace Adhesive WR LCD.

Run the Water Resistance Test again!

3. If scratched or damaged – replace the Display Assembly.

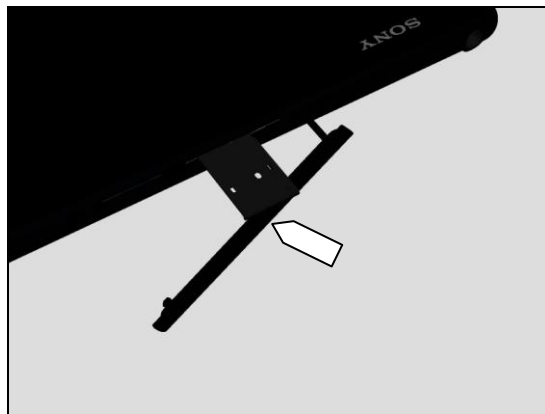
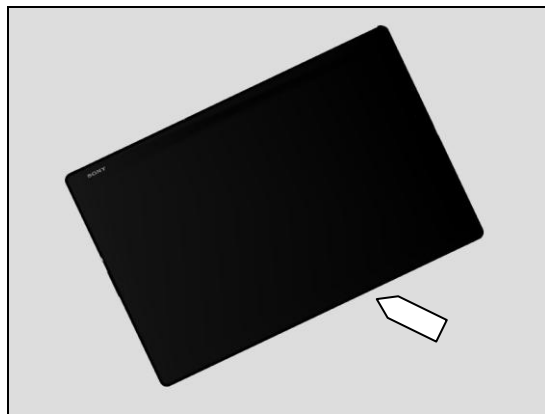
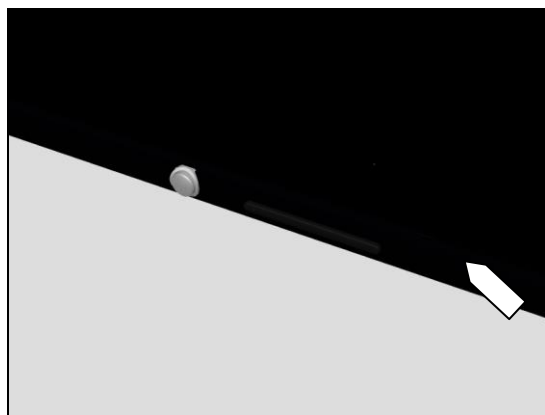
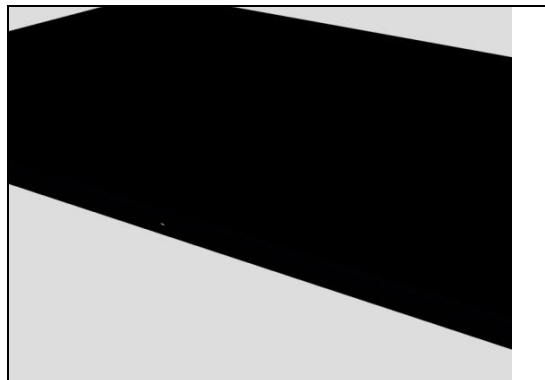
Run the Water Resistance Test again!

Check:

Inspect the Cap Assembly.

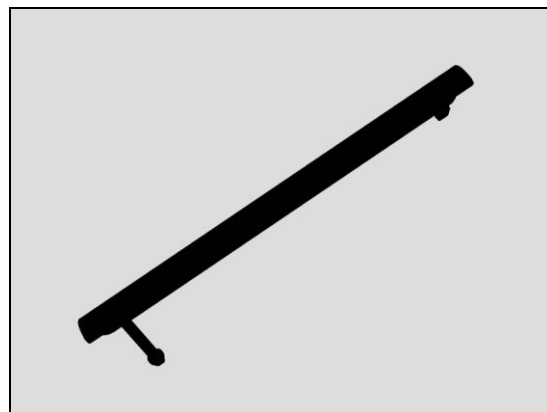
Action:

1. If dirty – clean it.
2. If not properly assembled – disassemble and reassemble it.



Problem Areas

3. If the Cap Assembly is damaged – replace it.
Run the Water Resistance Test again!

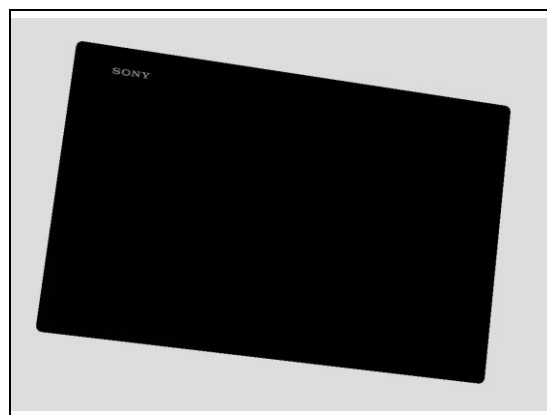


Check:

Inspect the Display Assy RoW

Action:

1. If dirty – clean it.
2. If not properly assembled – disassemble and reassemble it.



3. If the Display Assy RoW is damaged – replace it.
Run the Water Resistance Test again!



2 Revision History

Rev.	Date	Changes / Comments
1	2015-May-08	Initial release